

The factory has -

emergency lighting
fire extinguishers
disabled parking
and facility

- We would add
- security cameras
and sufficient
lighting outside
at the entry of
the building -

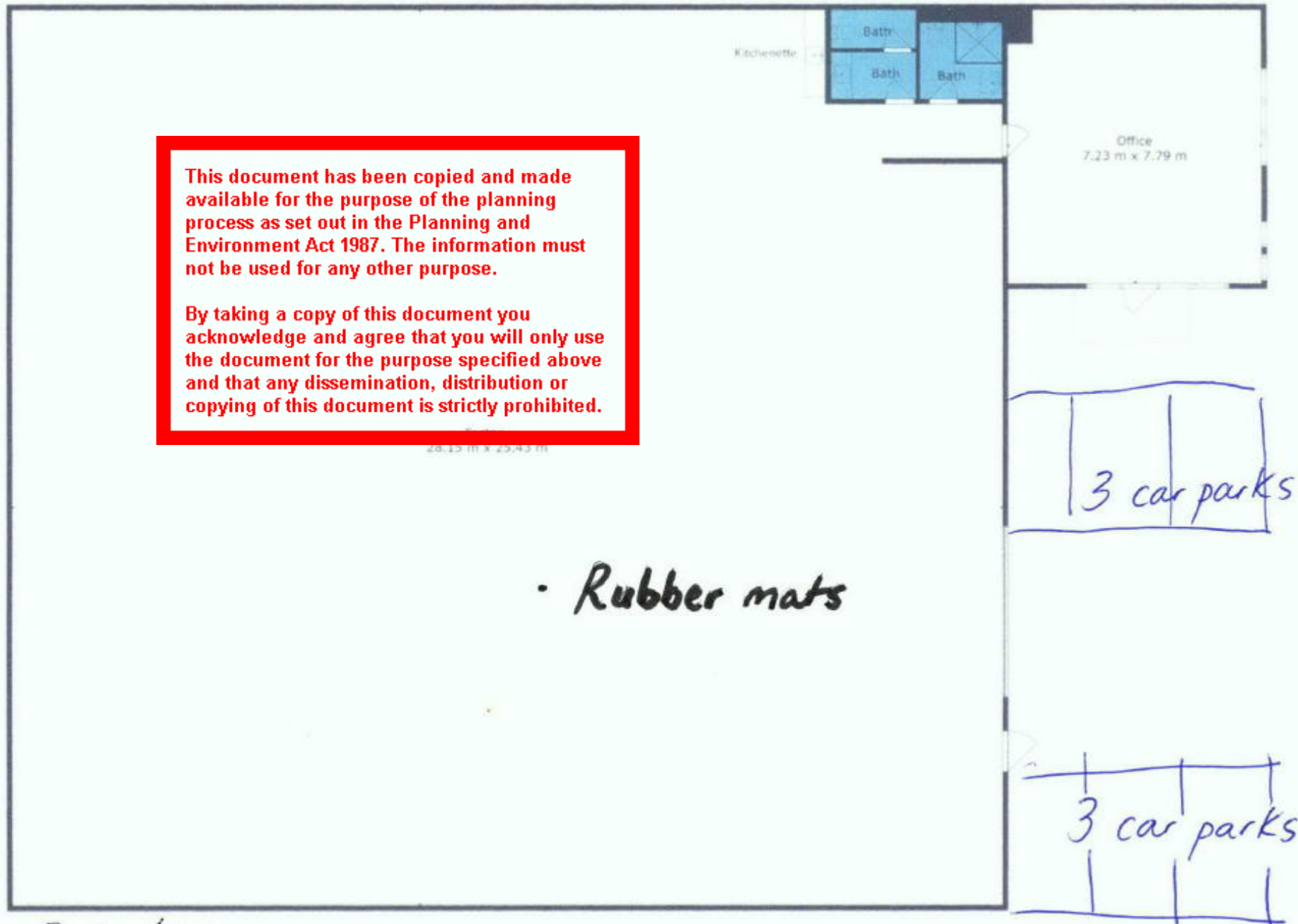
Maximum 20
members at a time

- 24/7 gym & classes

- 5am - 6pm

This document has been copied and made available for the purpose of the planning process as set out in the Planning and Environment Act 1987. The information must not be used for any other purpose.

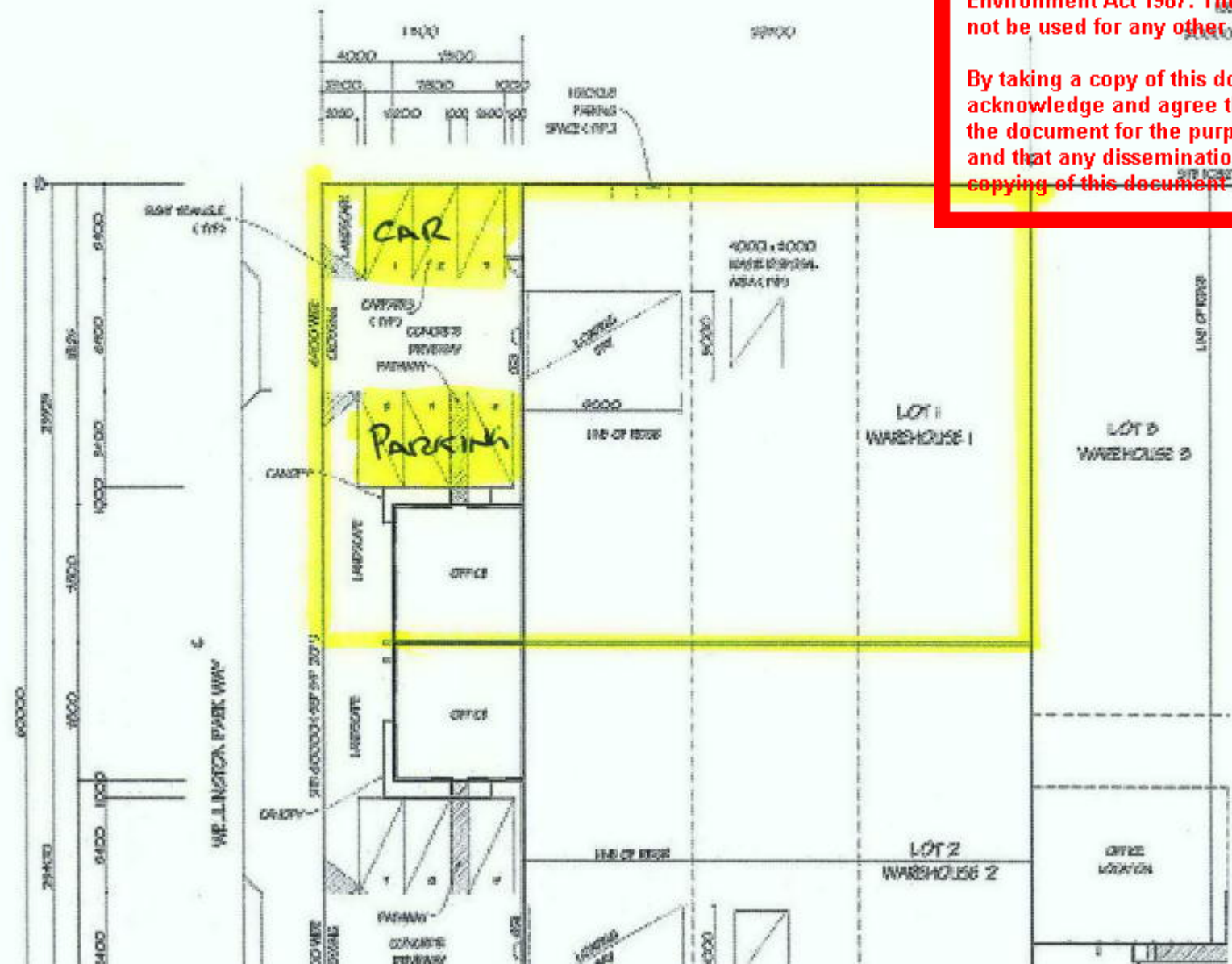
By taking a copy of this document you acknowledge and agree that you will only use the document for the purpose specified above and that any dissemination, distribution or copying of this document is strictly prohibited.



• Rubber mats

This document has been copied and made available for the purpose of the planning process as set out in the Planning and Environment Act 1987. The information must not be used for any other purpose.

By taking a copy of this document you acknowledge and agree that you will only use the document for the purpose specified above and that any dissemination, distribution or copying of this document is strictly prohibited.



I currently run a group fitness & 24/7 gym business at 18 Wade Cr
In Sale. It is in an Industrial zone 1.

The property I wish to relocate too is in the same area.

I have attached a copy of our current timetable (our busier times)
with all our classes at most have upto 20 people at one time:

We do play music during our class times - monitored by the fitness instructor
in charge.

24/7 gym members do not have access to music (they use headphones)

63-65 Wellington Park Way has no residential neighbours so
it is a perfect location for my business to thrive.

This document has been copied and made available for the purpose of the planning process as set out in the Planning and Environment Act 1987. The information must not be used for any other purpose.

By taking a copy of this document you acknowledge and agree that you will only use the document for the purpose specified above and that any dissemination, distribution or copying of this document is strictly prohibited.