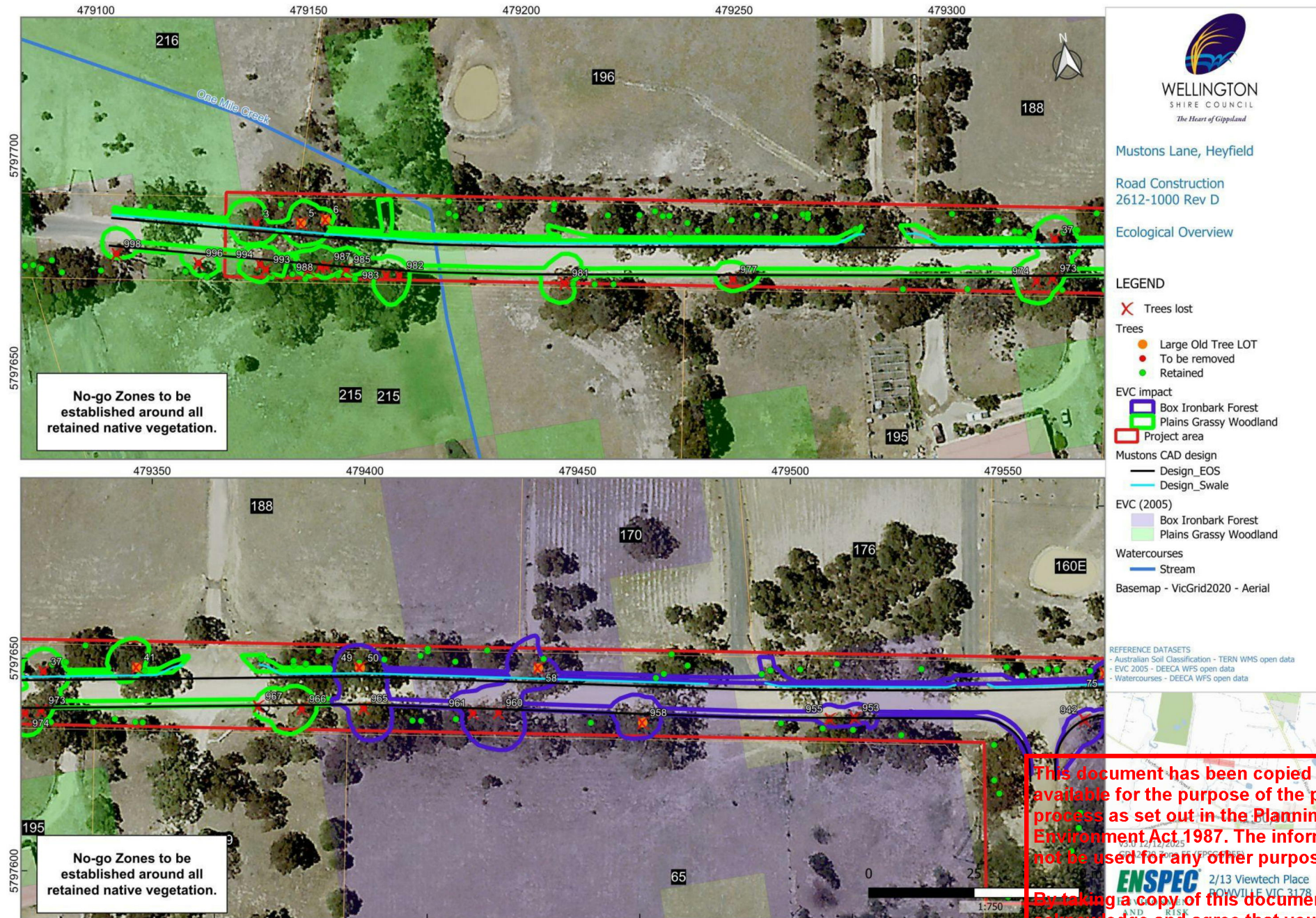


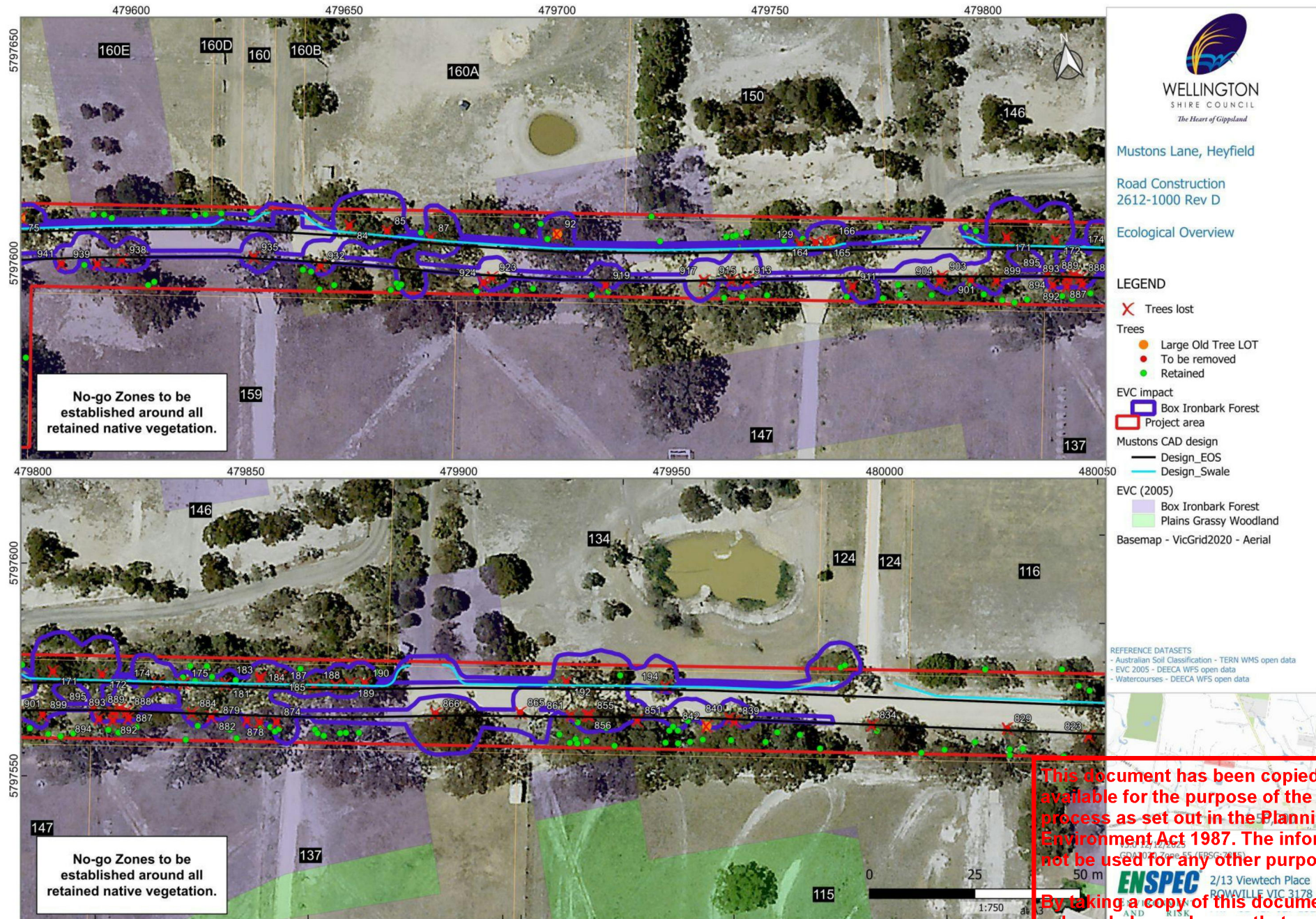
Figure 2 - Impact detail



This document has been copied and made available for the purpose of the planning process as set out in the Planning and Environment Act 1987. The information must not be used for any other purpose.

By taking a copy of this document you acknowledge and agree that you will only use the document for the purpose specified above and that any dissemination, distribution or copying of this document is strictly prohibited.

Figure 3 - Impact detail



  
**WELLINGTON SHIRE COUNCIL**  
*The Heart of Gippsland*  
 Mustons Lane, Heyfield  
 Road Construction  
 2612-1000 Rev D  
 Ecological Overview

**LEGEND**

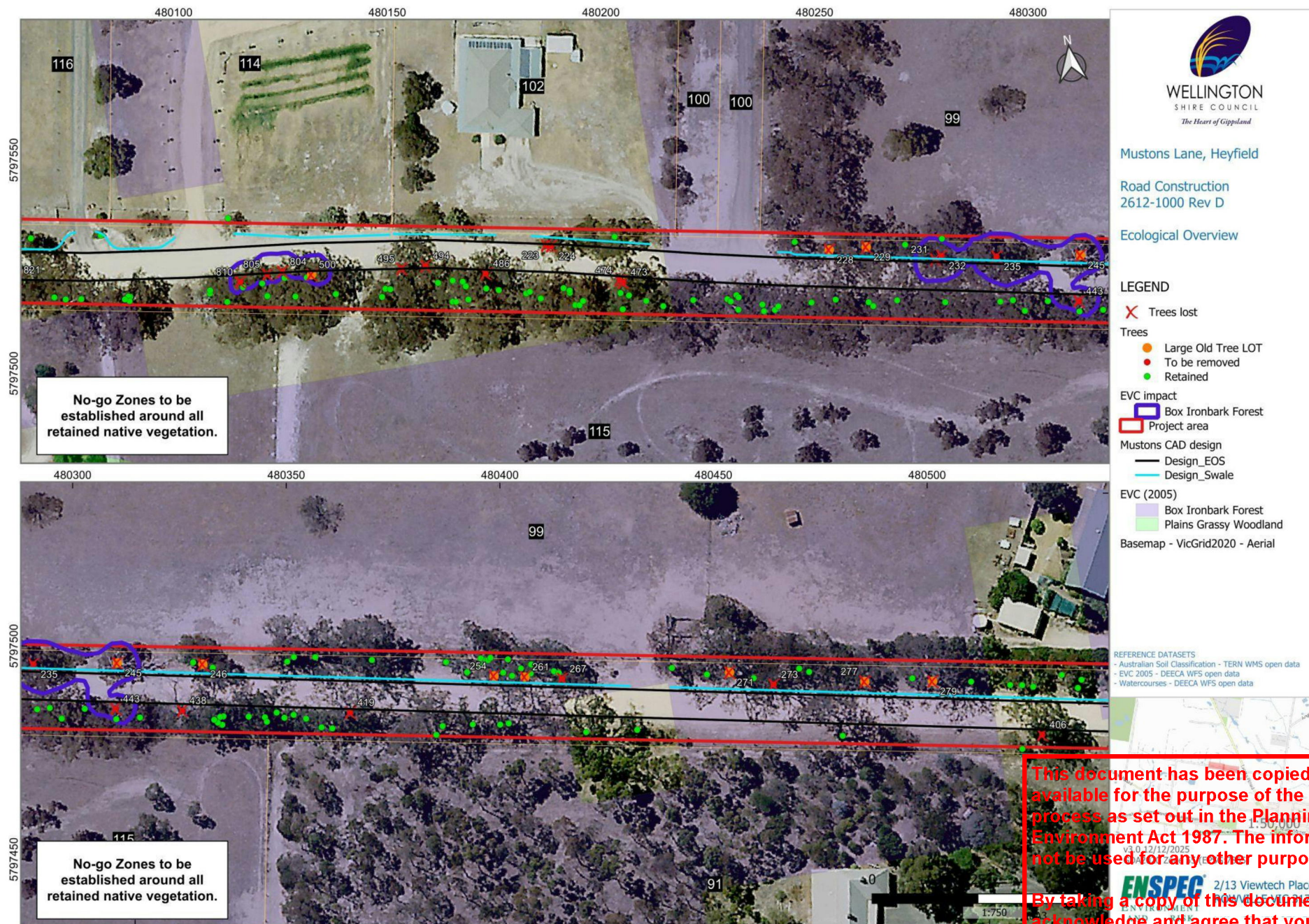
- X Trees lost
- Trees
  - Large Old Tree LOT
  - To be removed
  - Retained
- EVC impact
  - Box Ironbark Forest
  - Project area
- Mustons CAD design
  - Design\_EOS
  - Design\_Swale
- EVC (2005)
  - Box Ironbark Forest
  - Plains Grassy Woodland
- Basemap - VicGrid2020 - Aerial

REFERENCE DATASETS  
 - Australian Soil Classification - TERN WMS open data  
 - EVC 2005 - DECA WFS open data  
 - Watercourses - DECA WFS open data

This document has been copied and made available for the purpose of the planning process as set out in the Planning and Environment Act 1987. The information must not be used for any other purpose.

By taking a copy of this document you acknowledge and agree that you will only use the document for the purpose specified above and that any dissemination, distribution or copying of this document is strictly prohibited.

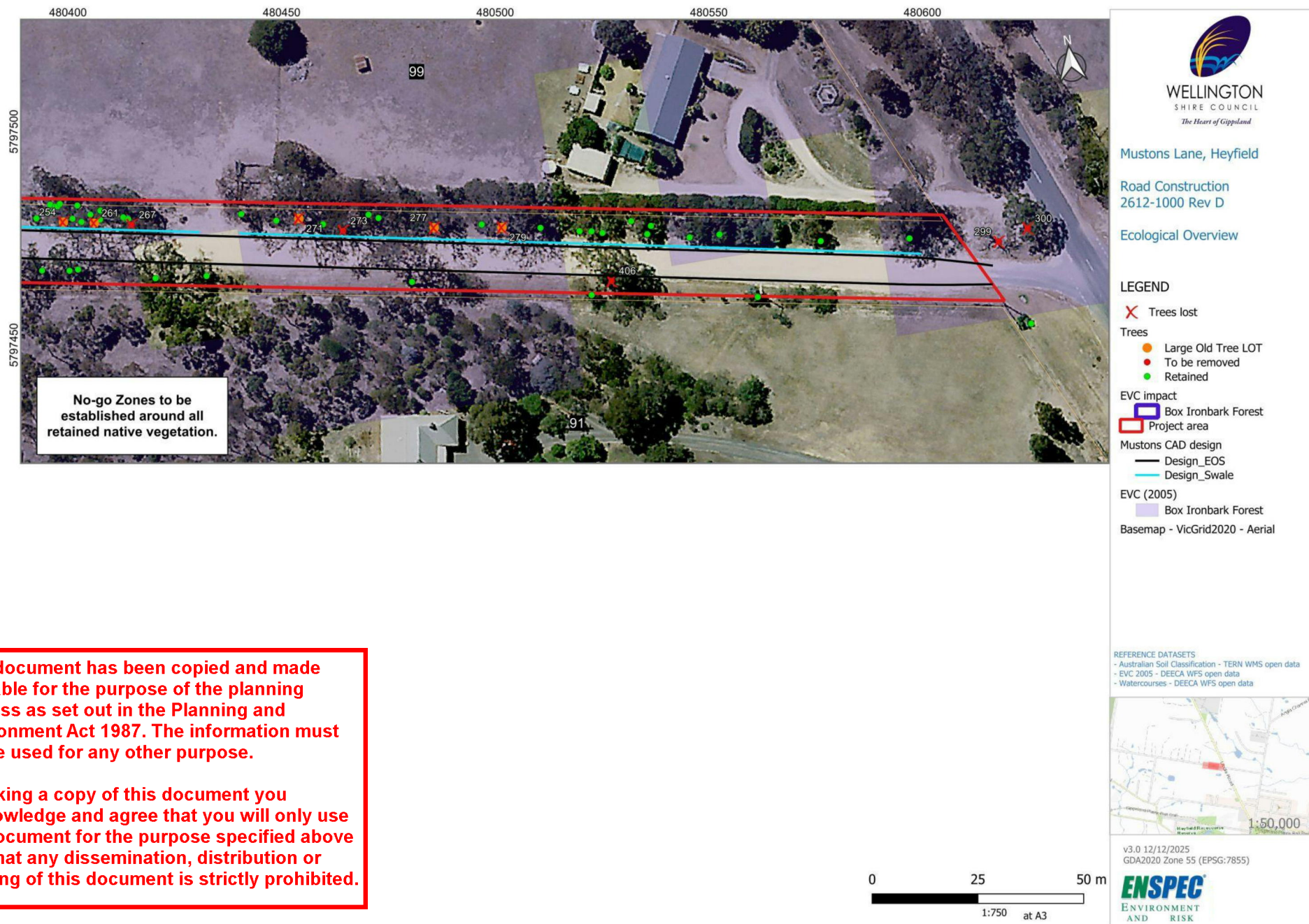
Figure 4 - Impact detail



This document has been copied and made available for the purpose of the planning process as set out in the Planning and Environment Act 1987. The information must not be used for any other purpose.

By taking a copy of this document you acknowledge and agree that you will only use the document for the purpose specified above and that any dissemination, distribution or copying of this document is strictly prohibited.

Figure 5 - Impact detail



This document has been copied and made available for the purpose of the planning process as set out in the Planning and Environment Act 1987. The information must not be used for any other purpose.

By taking a copy of this document you acknowledge and agree that you will only use the document for the purpose specified above and that any dissemination, distribution or copying of this document is strictly prohibited.