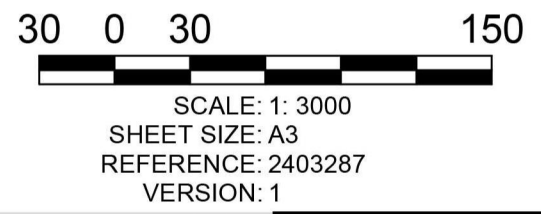


This document has been copied and made available for the purpose of the planning process as set out in the Planning and Environment Act 1987. The information must not be used for any other purpose.

By taking a copy of this document you acknowledge and agree that you will only use the document for the purpose specified above and that any dissemination, distribution or copying of this document is strictly prohibited.

NOTE:
 THE LAND IS THIS PLAN CONTAINS
 LOTS 1 & 2 ON TP675416M
 VOLUME 07699 FOLIO 170
 PARISH OF DEVON
 CROWN ALLOTMENT 77A
 ALL DIMENSIONS ARE APPROXIMATE AND
 SUBJECT TO FINAL SURVEY.



Proposed Plan of Subdivision

134 Jack River Connection Road, Jack River 3971



