

This document has been copied and made available for the purpose of the planning process as set out in the Planning and Environment Act 1987. The information must not be used for any other purpose.

By taking a copy of this document you acknowledge and agree that you will only use the document for the purpose specified above and that any dissemination, distribution or copying of this document is strictly prohibited.



REVISIONS	
Rev 1 - Dwg provided for feedback - 16 December 2025	
Rev 2 - Shed Update - 8 January 2026	
Rev 3 - Surface update - 14 January 2026	
Rev 4 - RFI Update - 18 February 2026	



Project	1-5 Temple Street Heyfield
Client	
Drawing	Proposed Site Plan



Scale | 1:200@ A3

FOR PLANNING ONLY

DISCLAIMER: HATCH PLANNING RETAINS COPYRIGHT OF DRAWINGS & ASSOCIATED DOCUMENTATION. REPRODUCTION IN WHOLE OR PART WITHOUT PRIOR PERMISSION FROM HATCH PLANNING PTY LTD (ACN: 652 375 507) WILL BE REGARDED AS AN INFRINGEMENT OF THE COPYRIGHT ACT (COPYRIGHT ACT 1968)

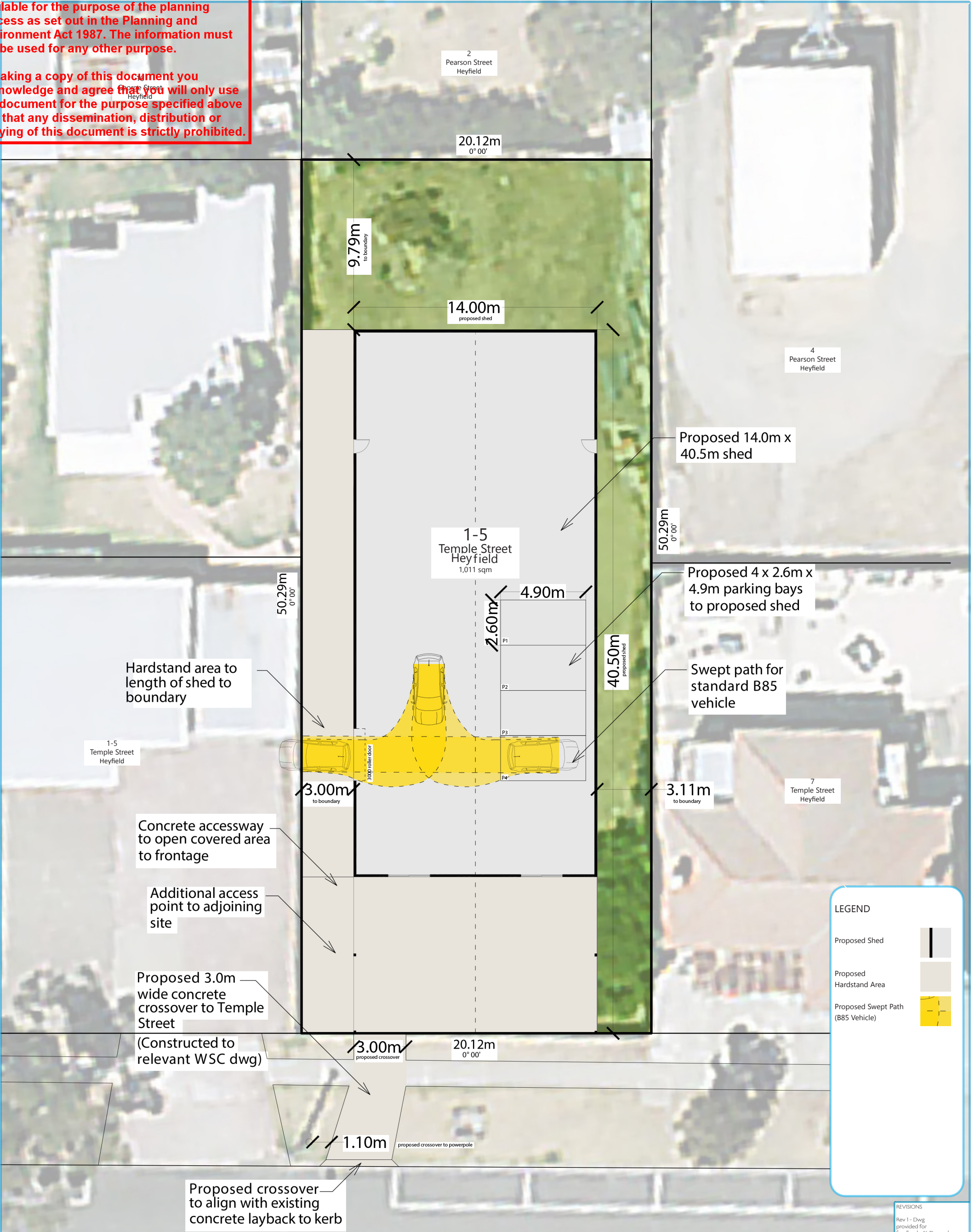
DWG  
A001

Date 18/02/2026



This document has been copied and made available for the purpose of the planning process as set out in the Planning and Environment Act 1987. The information must not be used for any other purpose.

By taking a copy of this document you acknowledge and agree that you will only use the document for the purpose specified above and that any dissemination, distribution or copying of this document is strictly prohibited.



Proposed Parking Plan | 1:200@ A3

TEMPLE STREET



Project | 1-5 Temple Street Heyfield

Client |

Drawing | Proposed Parking Plan



Scale | 1:200@ A3

FOR PLANNING ONLY

DISCLAIMER: HATCH PLANNING RETAINS COPYRIGHT OF DRAWINGS & ASSOCIATED DOCUMENTATION. REPRODUCTION IN WHOLE OR PART WITHOUT PRIOR PERMISSION FROM HATCH PLANNING PTY LTD (ACN: 652 375 507) WILL BE REGARDED AS AN INFRINGEMENT OF THE COPYRIGHT ACT (COPYRIGHT ACT 1968)

DWG  
A001

Date 18/02/2026

REVISIONS

Rev 1 - Dwg provided for feedback -16 December 2025

Rev 2 - Shed Update - 8 January 2026

Rev 3 - Surface update - 14 January 2026

Rev 4 - RFI Update - 18 February 2026



This document has been copied and made available for the purpose of the planning process as set out in the Planning and Environment Act 1987. The information must not be used for any other purpose.

By taking a copy of this document you acknowledge and agree that you will only use the document for the purpose specified above and that any dissemination, distribution or copying of this document is strictly prohibited.

