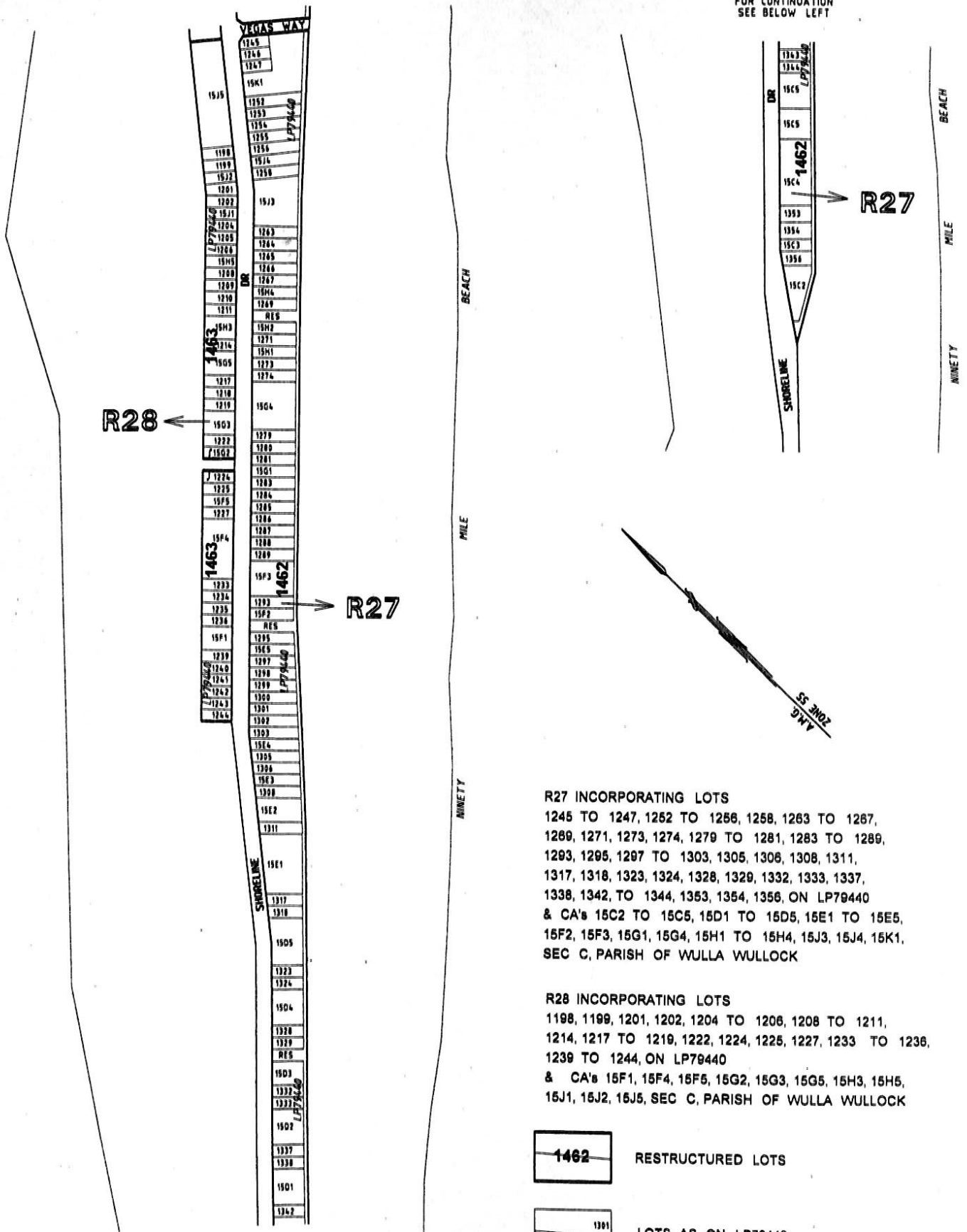


FOR CONTINUATION
SEE BELOW LEFT



R28

R27

R27

R27 INCORPORATING LOTS
 1245 TO 1247, 1252 TO 1256, 1258, 1263 TO 1267,
 1269, 1271, 1273, 1274, 1279 TO 1281, 1283 TO 1289,
 1293, 1295, 1297 TO 1303, 1305, 1306, 1308, 1311,
 1317, 1318, 1323, 1324, 1328, 1329, 1332, 1333, 1337,
 1338, 1342, TO 1344, 1353, 1354, 1356, ON LP79440
 & CA's 15C2 TO 15C5, 15D1 TO 15D5, 15E1 TO 15E5,
 15F2, 15F3, 15G1, 15G4, 15H1 TO 15H4, 15J3, 15J4, 15K1,
 SEC C, PARISH OF WULLA WULLOCK

R28 INCORPORATING LOTS
 1198, 1199, 1201, 1202, 1204 TO 1206, 1208 TO 1211,
 1214, 1217 TO 1219, 1222, 1224, 1225, 1227, 1233 TO 1236,
 1239 TO 1244, ON LP79440
 & CA's 15F1, 15F4, 15F5, 15G2, 15G3, 15G5, 15H3, 15H5,
 15J1, 15J2, 15J5, SEC C, PARISH OF WULLA WULLOCK

1462 RESTRICTED LOTS

1301
1302 LOTS AS ON LP79440

FOR CONTINUATION
SEE ABOVE RIGHT

WELLINGTON PLANNING SCHEME - LOCAL PROVISION

Fisher Stewart
 ENGINEERS - SURVEYORS - TOWN PLANNERS
 ENVIRONMENTAL CONSULTANTS

WELLINGTON SHIRE COUNCIL
 LOCAL GOVERNMENT
 COMMUNITY DEVELOPMENT
 Planning from Diversity



**NINETY MILE BEACH
 RESTRUCTURE PLAN
 STAGE R27 & R28**