

Locality: ROSEDALE
Place address: LYONS STREET (MEDIAN STRIP)
Citation date 2016
Place type (when built): Trees, Memorials, Memorial Garden
Recommended heritage protection: Local government level
Local Planning Scheme: Yes
Vic Heritage Register: No
Heritage Inventory (Archaeological): Yes

Place name: Lyons Street Beautification Trees and Memorial Reserve



Architectural Style: Various
Designer / Architect: Not Known

Statement of Significance

This statement of significance is based on the history, description and comparative analysis in this citation. The Criteria A-H is the Heritage Council Criteria for assessing cultural heritage significance (HERCON). Level of Significance, Local, State, National, is in accordance with the level of Government legislation.

What is significant?

Lyons Street Beautification Trees and Memorials Reserve, Rosedale, including the whole of the land bounded in the central median strips between 51 Lyons St and Rosedale-Longford Road, memorial structures (4), the memorial gardens including the 1885 beautification trees (11) and 1950s trees, the landscape setting and potential to yield archaeological data, is significant.

How is it significant?

Lyons Street Beautification Trees and Memorials Reserve, Rosedale, including the whole of the land bounded in the central median strips between 51 Lyons St and Rosedale-Longford Road, memorial structures (4), the memorial gardens including the 1885 beautification trees (11) and 1950s trees, the landscape setting and the potential to yield archaeological data, are historically, socially, aesthetically and scientifically significant at a local level to Wellington Shire.

Why is it significant?

Lyons Street Beautification Trees and Memorials Reserve are **historically significant at a local level** for:

- The memorials and trees are located on their original sites.
- The two memorials in recognition of the soldiers from the district who served in WW1, WW2, and several other conflicts, identified on each of the memorials.
- The Angus McMillan Memorial Cairn, as one of a series of cairns in Gippsland, for its strong associations with Angus McMillan who completed several expeditions in Gippsland from 1840. In 1859 McMillan was the first representative for South Gippsland to the Victorian Legislative Assembly.
- The memorial plaque commemorating Victoria's 150th anniversary in 1985. The plaque 'was unveiled by Cr. N. W. Schroeter, Shire President on 9th March 1985, at Rosedale to commemorate the re-enactment of the stage coach/pack train journey between Port Albert and Walhalla'.
- The incontiguous row of 11 Purple-leaved Dutch Elm trees which were provided by the government to the local council prior to 1885, which is the earliest known surviving beautification street tree planting in Rosedale.
- The other trees, including the Himalayan Cedar that form part of the 1950s Memorial Gardens developed by the Council. (Criteria A & D, H)

Lyons Street Beautification Trees and Memorial Reserve are **socially significant at a local level** for:

- The volunteers who raised funds for and constructed the monuments and their associated elements, and for the Anzac Day and other remembrance services held at the place throughout its history until present day. (Criteria A & G)
- As part of a series of cairns which have been erected by each local community, to perpetuate the memory of the explorer Angus McMillan, and to mark the routes of his main explorations in Gippsland. The cairn is also significant for the volunteers who raised funds for the monument, and who organised the monument and unveiling ceremony by his Excellency the Governor of Victoria Lord Somers, on 6 April 1927. The Rosedale cairn was erected by the Hon. E. J. Croke on behalf of the residents of the Rosedale Shire (Criteria A, G & H).

Lyons Street Beautification Trees and Memorial Reserve are **aesthetically significant at a local level** for:

- The Inter War Classical WW1 monument, and subsequent monument and plaques for WW2 and later conflicts, constructed of high quality materials such as granite and bluestone. (Criteria D & E)
- The Angus McMillan Memorial, for the Inter War vernacular monument of an unpainted coursed local stone cairn, with a marble plaque with lead lettering, surmounted by a short flag pole. (Criteria D & E)
- The Purple-leaved Dutch Elms, Himalayan Cedar and other mature trees which beautify the Lyons Street streetscapes, as historically intended. (Criterion E)

Lyons Street Beautification Trees and Memorial Reserve are **scientifically significant at a local level:**

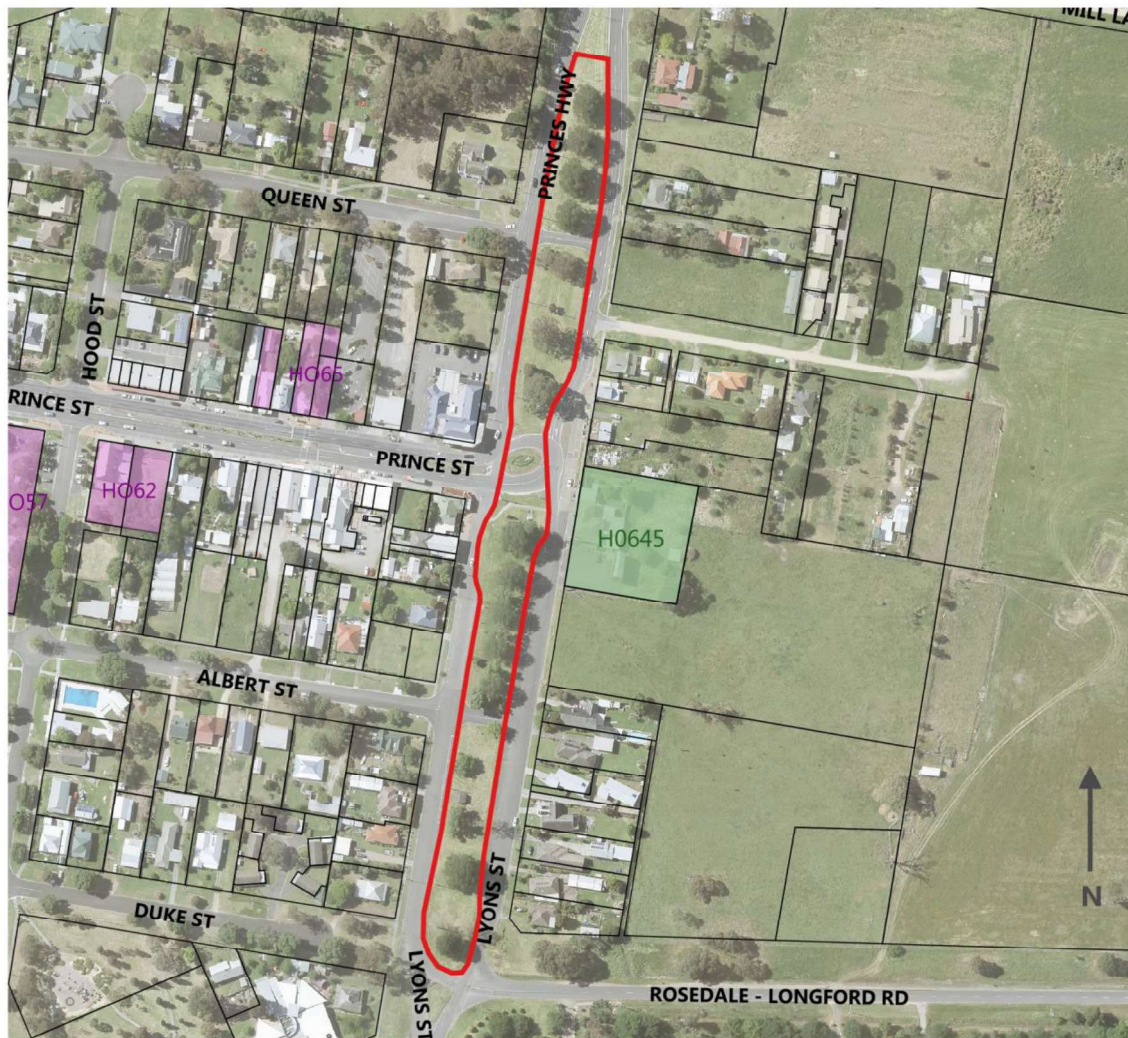
- Particularly for the work of the artisans with stonemasonry skills on the WW1 monument, which are now rarely used for new monuments. (Criteria B & F)
- For the potential to yield archaeological evidence in the land, particularly around the monuments. (Criterion C)
- The Purple-leaved Dutch Elm (*Ulmus x hollandica 'Purpurascens'*) cultivar is a rare cultivation in Europe, is unknown in other Australian states, and has a scattered occurrence in only a dozen other locations in Victoria, where there are never more than a few trees in any given location. Therefore, these trees are significant for their rarity in Victoria. Furthermore, this cultivar is no longer commercially available in Victoria. (Criteria B & C)

Statutory Recommendations

This place is recommended for inclusion in the Schedule to the Heritage Overlay of the Wellington Shire Planning Scheme with the boundaries as shown on the map.

External Paint Controls	Yes, including cleaning
Internal Alteration Controls	No
Tree Controls	Yes
Fences & Outbuildings	No
Prohibited Uses May Be Permitted	No
Incorporated Plan	No
Aboriginal Heritage Place	Not assessed

Map of recommended boundary for Heritage Overlay



KEY

- Recommended for Heritage Overlay
- Victorian Heritage Register
- Existing Heritage Overlay
- Title boundary

Lyons Street Beautification Trees and Memorial Reserve

Lyons Street (median strip), Rosedale

Project: Wellington Shire Stage 2 Heritage Study

Client: Wellington Shire Council

Author: Heritage Intelligence Pty Ltd

Date: 12/2/16

History

Thematic context

This place is associated with the following themes from the *Wellington Shire Thematic History* (2005):

1. Exploration:

- 1.2 Pioneer Explorers

8. Governing and administering:

- 8.7 War and Defence

9. Developing cultural institutions and way of life:

- 9.2. Memorials

The following is based on information taken from the *Wellington Shire Thematic Environmental History* (Context 2005:45-6):

Memorials are erected throughout the Shire in honour of pioneers and district explorers, significant events and people, and those who served in world wars and other conflicts.

The soldiers' memorials that are spread throughout the Shire show the impact that the two world wars, and subsequent conflicts, had on so many communities and families within the Shire. It must be remembered that while commonly referred to today as 'war memorials', these memorials were originally erected in honour of, and to commemorate, the soldiers and those who made the ultimate sacrifice for their country. The memorials were often funded by the community and erected with great community pride, in honour of the locals who died or served and returned.

The group of Rosedale memorials comprises two soldiers memorials and an Angus McMillan memorial. Among the names listed on the soldiers memorials are those of James Wilfred Harrap and Ernest Merton Harrap, brothers from Willung who were killed on the same day at the battle for Polygon Wood near Ypres in 1917. Listed on the Briagolong soldiers' memorial are the names of six Whitelaw brothers, three of whom were killed on active service and one who died later from wounds received. A memorial to their mother, Annie Whitelaw, was erected at her grave in honour of her sacrifice, and to all mothers of sons who served at the front. Soldiers' memorials also remain at Maffra, Stratford and Yarram, to name a few. While St James Anglican Church in Heyfield stands as a Soldiers' Memorial Church. There are also remnants of avenues of honour. The pine trees at Stratford lining the route of the former highway were planted as a memorial to soldiers who served in the First World War. Many of the memorials also have plantings, such as a lone pine, planted in connection with the memorial.

Among the many other memorials in the Shire are those to district pioneers. The cairns erected to Angus McMillan and Paul Strzelecki in 1927 follow their routes through the Shire and were part of an orchestrated campaign of the Victorian Historical Memorials Committee to infuse a sense of history into a landscape that had no ancient monuments.

The struggle for road access in isolated areas is remembered by a cairn dedicated to the Country Roads Board, erected in 1935 at the intersection of the Binginwarri and Hiawatha roads. Transforming a landscape from dryland grazing to irrigated pasture is symbolised by a dethridge wheel mounted on a cairn on the Nambrok Denison estate. A memorial is planned at site of the West Sale Holding Centre to commemorate the migrants who came to settle in postwar Australia. Bronze plaques, designed by Sale artist Annemieke Mein and on display in Sale, document the contributions of several famous Gippslanders, including singer Ada Crossley and writer Mary Grant Bruce.

Place history

There are several interrelated heritage items in the Lyons Street Beautification Trees and Memorials Reserve, Rosedale. The reserve has a northern end, central section and a southern end. The place comprises the pre-1885 street beautification trees (11) along the full length of the reserve, 1927 Angus McMillan Memorial Cairn, the 1935 WW1 monument and subsequent plaques, a 1996 conflict monument, 1951 Memorial Garden plantings, and a small 1985 memorial. All of them are located in the road reserve, and most are in the central section, south of the roundabout at the intersection of Prince Street and Lyons Street. However, the pre-1885 beautification trees extend from the former Shire Offices in the south, to the northern end near the bridge. Three of the large memorial structures stand in a row, perpendicular to Lyons Street; listed east to west is the soldiers' memorial, the honour wall and the Angus McMillan monument. A flagpole stands in front of them and a small rose garden with a small plaque, is located in front of the WW1 memorial. The 1985 memorial is located at the southern end, near the intersection with Albert Street.

Street tree beautification Pre 1885-1950s

Lyons Street road reserve has had a long history of being planted with predominantly exotic trees, down the centre of the road. A local newspaper article by the Rosedale correspondent in 1874 reported that the Rosedale Council wanted 'to have a double roadway in Lyons street, which is a three-chain thoroughfare, and plant the centre with trees so as to have a boulevard at some future day between rival shopkeepers'. At this date the Shire engineer had prepared the plans for Lyons Street, which was 'a perfect mudhole after a shower of rain' (*Gippsland Times*, 14 Mar 1874:3). An early photo (exact date not known; Figure H1) of Lyons Street showed that the central road reserve of Lyons Street was first planted with pine trees (Fig H7) (SLV).

In December 1885, the new Bank of Australasia in Rosedale was completed and the local newspaper reported on the '4 fine elm trees standing in front of it' (Fig H6) which were soon to be cut down as they obscured the facade of the new building. The author of the article suggested that the elms should be re-planted, 'or could be placed even in that mathematical line running down Lyons-street, where some of the first planted have died out' (*Gippsland Times*, 18 Dec 1885:3). The existing Elms on Lyons Street can be seen to be planted in a straight line (Figs D3 & D4), and some early photographs also show the elms in a straight line (Fig H4) which is consistent with the work of the 1880s shire engineer. Martin Norris inspected the existing Purple-leaved Dutch Elm trees in Lyons Street and suggests that the surviving trees are of a comparable size to others in Wellington Shire that were planted in the 1880s (Norris 2016). The local historical society suggests that the existing Purple-leaved Dutch Elm trees in Lyons Street are about 100 years old, in 2015 (RDHS).

In 1894, it was reported that there were pines and elms which grew tall and wide, creating a striking landscape form, dense green colours and shade, in a roadway that was previously referred to as 'a bare eyesore' (*Gippsland Times* 25 Jun 1894:3) (Fig H1). In June 1894 it was noted that the shire had made application to the state nursery for a supply of trees, from Macedon Government Nurseries, and the question was where to plant them. An article in 1894 reported that 'there can be no doubt that one of those places [where the trees should be planted] should be the wide space between the road ways in Lyons-street. Several years ago a row of trees were planted by the then shire engineer, who, being a man of mathematical ideas, conceived the line of beauty to be a straight one, strictly down the centre of the street. Some exception was taken at the time to this mathematical precision idea, but the engineer was a man of purpose and nerve, ruled his line along the plan, and so the trees were planted. The expense of providing guards for those trees would have about fenced in the centre plots of land, and it is locally suggested were to do so now, ie that if the council erect a neat fence round the plots, lay out some walks, and plant the balance of the ground with the trees to be obtained, the aspect of the locality would in a very short time be much changed, and what is now a bare eyesore become a pleasant place of resort' (*Gippsland Times* 25 Jun 1894:3).

A photo of the Back to Rosedale celebrations in 1929 (Figure H2) showed the Angus McMillan Memorial in front of a pine tree, but it is not certain if an Elm was located behind the memorial (RDHS). A photo dating to the unveiling of the war memorial in 1935 (Figure H3) showed that an Elm tree appeared to be evident in this photo, directly behind the memorials (looking south down Lyons Street). Mature pine trees also remained in the background (RDHS website).

A local newspaper article reported in July 1950 that the Council authorised the removal of pine trees in Lyons Street, Rosedale, 'or at least the five most troublesome trees from the memorial, opposite the Rosedale Hotel'. One argument was to remove all of the pines, healthy and not, to allow the 'young trees' a chance to develop. These new trees were planted 'interspersed' evenly with the existing pines (*Gippsland Times*, 20 Jul 1950:4).

A memorial garden was planted in Lyons Street (south of the memorial to the Council offices) in 1953. This comprised the planting of 'the most suitable trees possible' and to use standard roses (*Gippsland Times*, 18 Jan 1951:5; 22 Jun 1953:7; 20 Aug 1953:5). A photo (Figure H4) dating to approximately 1954, showed the memorials in front of an Elm, planted south of the Princes Highway (SLV). At this date, the memorials are enclosed in a fence, and rose gardens are planted to the south between the elms. The mature pines had since been removed from this section. It was probably at this date that the Himalayan Cedar (*Cedrus deodara*), was planted. Its size suggests that it was planted in the 1950s (Hawker 2016). It is visible as a young tree in the c1955 photo (Fig H4).

The Elm trees were pollarded at a later date (at the height of 3.5m). Other exotic trees have been interplanted with the Elms at the southern end of the row. Elms appear to have been removed at an unknown date particularly from one the northern median strips, evidenced by Fig H5. In 2015, the Elm at the north end of the row is the largest known example of the species in Victoria (NT).

Angus McMillan Monument 1927

The cairn commemorates 'the discovery of Gippsland by Angus McMillan, who explored it in 1839-40-41'. It was 'unveiled by his Excellency the Governor of Victoria Lord Somers, April 6th 1927'. It was 'erected by the Hon. E. J. Crooke on behalf of the residents of the Rosedale Shire' (plaques on cairn). The cairn was built by Tom Duck (Hardy 1989:14).

A photo of the Back to Rosedale celebrations in 1929 (Figure H1) showed the Angus McMillan Memorial, and it appears unchanged in 2015 (RDHS). No other memorials existed in this location at this date. A tree stood to the left (east) of the cairn (since removed). A photo dating to 1935 (Hardy 1989:142) showed that the pole on top of the cairn served as a flagpole (Figure H2).

Soldiers' Memorial 1935

The Soldiers' Memorial commemorates the Shire residents who served in World War I and II. The memorial was erected and unveiled in 1935. Among the names listed are those of James Wilfred Harrap and Ernest Merton Harrap, brothers from Willung who were killed on the same day at the battle for Polygon Wood near Ypres in 1917 (Context 2005:45).

Photos (Figs H2 & H3) dating to the unveiling of the war memorial in 1935 showed a large crowd gathered, and a union jack draped over the memorial (RDHS website). To the right (west) stood the Angus McMillan monument. A more detailed photo, dating to c1955 (Figure H4), showed that the two monuments and the area was enclosed by a fence, made of timber posts, a metal top rail and cyclone wire, with a pair of metal gates (since removed). To the rear were the memorial gardens at this date (Hardy 1989:142).

Leading to the memorial from the north is the 'Australia Remembers' Garden. The two garden beds have a red marble edging (the same material as the honour wall) and were planted with roses in 2015. The garden was dedicated by Reverend N. Cameron on 15 August 1995 (plaque on site).

Memorial gardens 1951

Memorial gardens were planted in Lyons Street (south of the memorial towards the Council offices) in 1953. This comprised the planting of 'the most suitable trees possible' and standard roses (*Gippsland Times*, 18 Jan 1951:5; 22 Jun 1953:7; 20 Aug 1953:5). A photo (Figure H4) dating to c1955 showed the soldiers' memorial and Angus McMillan cairn (SLV). A small palm tree stood between the monuments (recently removed), the young Himalayan Cedar (planted 1950s probably as part of the memorial garden) was to the left of the gates, and a flagpole stood in front of this. The area was surrounded by a fence. To the rear (south) of this area was what appears to be the rose garden (since removed). There are a substantial number of mature trees remaining to the rear, positioned in a straight line. Every second tree is younger than the others indicating that the older ones were planted in the 1890s (*Gippsland Times* 25 Jun 1894:3) and the remainder in the 1953. Five unsafe older pine trees were removed in 1950 (*Gippsland Times*, 20 Jul 1950:4).

Plaque commemorating Victoria's 150th anniversary 1985

At the south end of town in the Lyons Street road reserve (just south of the Albert Street intersection) is a plaque mounted to a granite rock, commemorating Victoria's 150th anniversary in 1985. The plaque notes that it 'was unveiled by Cr. N. W. Schroeter, Shire President on 9th March 1985, at Rosedale to commemorate the re-entactment of the stage coach/pack train journey between Port Albert and Walhalla'.

Honour Wall 1996

The red polished granite honour wall was erected 'in honour of the men and women of Rosedale and District who contributed to our nation's freedom'. A plaque notes that the honour wall was donated by Garry and Vicki Leeson, and was unveiled by Tom Wallace and dedicated by the Reverend N. Cameron on Remembrance Day, 11 November 1996 (plaque on wall). A circular emblem at the top of the wall reads 'Australia Remembers, 1945-1995' with a relief of a family. The wall originally stood directly behind a palm (evident in the 1955 photo H4). The palm was removed post-1996.



Figure H1. Photo taken during the Back to Rosedale celebrations in 1929 (RDHS Facebook page).



Figure H2. Photo of the unveiling of the soldiers' memorial in 1935 (RDHS website).



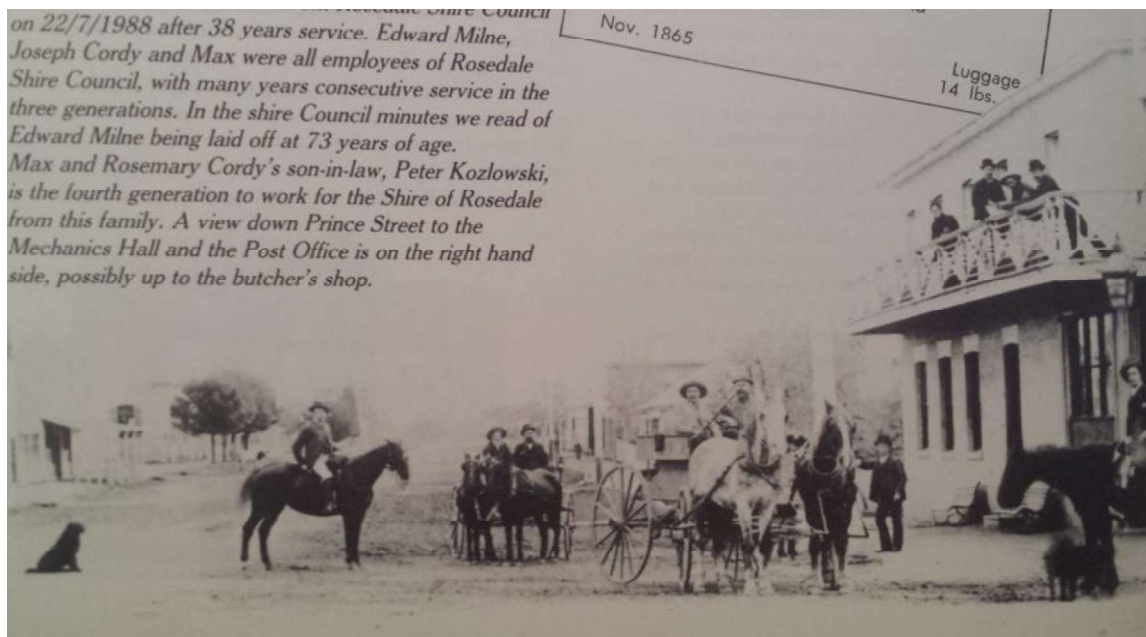
Figure H3. A detailed photo dating to 1935, of the unveiling of the soldiers' memorial, with a surrounding fence, and Elm to the rear (Hardy 1989:142).



Figure H4. A c1955 photo showing the memorials and memorial gardens to the rearm including the young Himalayan Cedar to the left of the gates and an Elm in the centre behind the palm (SLV).



Figure H5. A c1950 photo showing a mature tall pine and elm on the northern road reserve of Lyons Street (since removed). The Exchange Hotel is in the foreground (Hardy 1989:590)



on 22/7/1988 after 38 years service. Edward Milne, Joseph Cordy and Max were all employees of Rosedale Shire Council, with many years consecutive service in the three generations. In the shire Council minutes we read of Edward Milne being laid off at 73 years of age. Max and Rosemary Cordy's son-in-law, Peter Kozlowski, is the fourth generation to work for the Shire of Rosedale from this family. A view down Prince Street to the Mechanics Hall and the Post Office is on the right hand side, possibly up to the butcher's shop.

Figure H6. Photo dating to the 19th century, with a view looking west along Princes St, showing the Exchange Hotel on the right, and four trees (possibly elms?) in the location of the former 1885 Bank of Australasia (Hardy 1989:52).



Figure H7. View illustrating the line of mature trees (pines and elms) which appear to continue past the Exchange Hotel, looking north along Lyons Street (SLV).

Sources

Context Pty Ltd (2005), *Wellington Shire Heritage Study*, and vol 2: 'Wellington Shire Heritage Study Thematic Environmental History', prepared for Wellington Shire Council.

Hawker, John, Heritage Officer (Horticulture) at Heritage Victoria, personal communication via email, 13 January 2016.

National Trust (NT), 'Ulmus x hollandica 'Purpurascens'', Place ID No. 70604, <<http://vhd.heritagecouncil.vic.gov.au/>>, accessed 22 Dec 2015.

Norris, Martin, Wellington Shire Council Coordinator, Open Space Planning and Support, Natural Environment and Parks, personal communication via phone 19 February 2016.

Rosedale & District Historical Society (RDHS) collection: historical information and photos generously provided by Marion Silk, provided Nov 2015. Includes information held on the Rosedale & District historical society website, <<http://home.vicnet.net.au/~rdhs/ourbuilding.htm>>, and facebook page 'Rosedale & District Historical Society', accessed Dec 2015.

Gippsland Times

Hardy, Gwen (1989), *Rosedale, 150 Years Pictorial History*, Rosedale (Vic).

Rosedale & District Historical Society (RDHS) collection: historical information and photos generously provided by Marion Silk, provided Nov 2015. Includes information held on the Rosedale & District historical society website, <<http://home.vicnet.net.au/~rdhs/ourbuilding.htm>>, and facebook page 'Rosedale & District Historical Society', accessed Dec 2015.

State Library Victoria (SLV) picture collection: Rose Series P. 14239; image no. b52206 <<http://www.slv.vic.gov.au/>>, accessed 22 Dec 2015.

Description

This section describes the place in 2016. Refer to the Place History for additional important details describing historical changes in the physical fabric.

c1880s Purple-leaved Dutch Elm trees

The incontinuous row of 11 Purple-leaved Dutch Elm trees are located in the central median strip of Lyons Street, Rosedale. The row extends from (level with) 51 Lyons Street at the north end, and Rosedale-Longford Road at the south end.

The Rosedale Purple-leaved Dutch Elms are the largest and most impressive row of this cultivar in Victoria. These trees make a significance contribution to the landscape being located in the median strip of a national highway, and also make a significant contribution to the historic character of Rosedale. This cultivar is a rare in cultivation in Europe, is unknown in other Australian states, and has a scattered occurrence in only a dozen other locations in Victoria, where there are never more than a few trees in any given location. Therefore, these trees are significant for their rarity in Victoria. Furthermore, this cultivar is no longer commercially available in Victoria (National Trust's expert committee for significant trees).

The following is taken from the 1997 National Trust (Vic) citation for 'Ulmus x hollandica 'Purpurascens', Princes Highway, Rosedale:

These trees appear to have been severely pollarded at 3.5m but still make an impressive contribution to the landscape. An uncommon cultivar in Victoria, with other known occurrences at Wallan, Gisborne, Kyneton and Fawkner Park. The measured tree, at the northern end, is the largest known example in Victoria.

Significance:

- *Contribution to the landscape*
- *Rare or localised*

Common name: Purple-leaved Dutch Elm

Tree family: Ulmaceae

No of trees: 11 (incontinuous row) (2015)

Location: Princes Highway, Rosedale, along central median before La Trobe River bridge

Measurements: 23/03/1997

Spread (m): 19

Girth (m): 3.85

Height (m): 21.75

Estimated Age (yrs): 100

Condition: Good

Access: Unrestricted

Classified by the National Trust of Victoria: 10/04/1997

1927 Angus McMillan Cairn

The cairn is a unique vernacular design, most likely made by local craftsman and reflecting the tradition of building with locally available materials where possible. The stones may be from the ridge to the north of the town, as they appear to be the same type as those used on the plinth of the former 1886 Australasian Bank, and the memorial rock to commemorate the widening of the bridge in 1996. The stones have been roughly hewn into ashlar blocks and set with thick protruding mortar to form an obelisk form, with a shallow pyramidal form on top surmounted with a short flagpole on top. The memorial has darkened in colour, possibly due to the pollution from traffic fumes.

1935 Soldiers' Memorial

The Soldiers' memorial is constructed of a large polished (Harcourt?) granite pedestal in the Inter War Classical style. The central areas for the names of the soldiers have beveled edges creating a fine distinction between the light grey stone and the more polished darker grey stone, with the lead lettering. There are several metal (bronze?) ornaments, and a black painted incised cross.

1951 Memorial gardens

There are several mature elm trees planted in a line from the memorials south towards the former Shire Offices and this is consistent with the action of the Shire Engineer in the 1880s who planted trees 'strictly down the centre of the street'. However, every second tree is younger (ash?) than the others, indicating that the older ones were planted in the 1880s and the remainder in 1994, and 1953 to form the Memorial Gardens. The young Himalayan Cedar was planted 1950s and was probably planted as part of the memorial garden.

Plaque commemorating Victoria's 150th anniversary 1985

At the south end of town in the Lyons Street road reserve (just south of the Albert Street intersection) is a plaque mounted to a granite rock, commemorating Victoria's 150th anniversary in 1985. The plaque notes that it 'was unveiled by Cr. N. W. Schroeter, Shire President on 9th March 1985, at Rosedale to commemorate the re-entactment of the stage coach/pack train journey between Port Albert and Walhalla'.

1996 Honour Wall

The red polished granite honour wall is constructed of four large slabs of stone, highly polished on both front and back and set into a concrete footing which is level with the ground. The front has a large round emblem made of bronze, which has a painted and lacquered finish. The lettering on the memorial is a gold coloured metal, possibly bronze and there is a modern bronze, paint and lacquer plaque.



Figure D1. Detail of the polished granite of the Soldiers' Memorial, with the incised cross painted black, and metal ornament on the WW1 memorial.

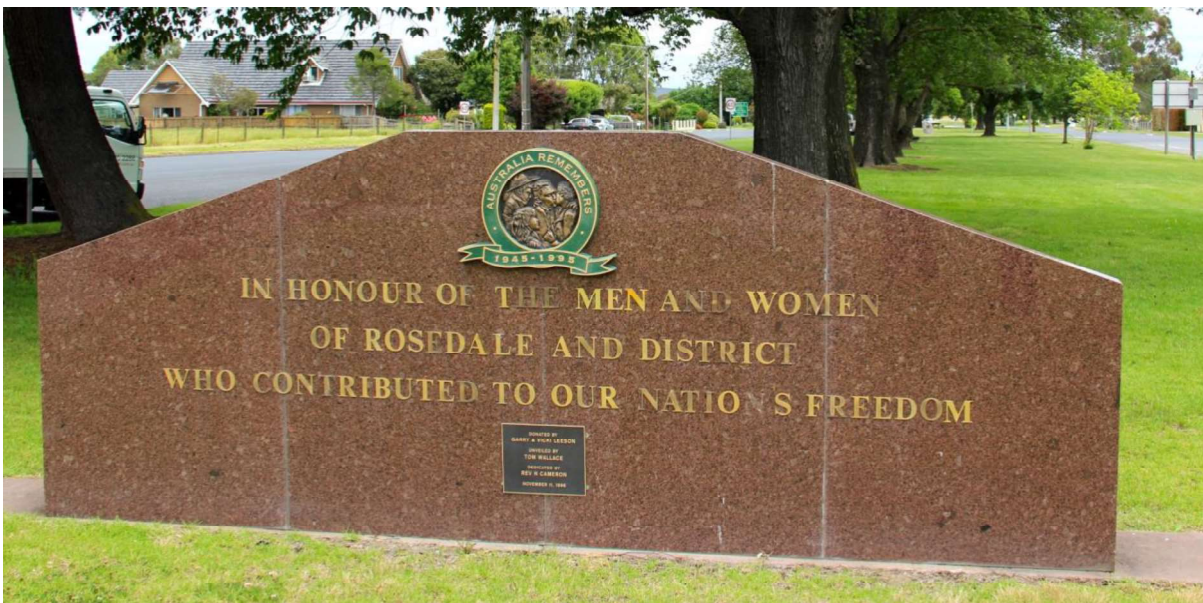


Figure D2. The 1996 polished red granite memorial showing tarnished lettering and staining along the joints.



Figure D3. South end of Elm trees interspersed with 1950s trees planted as part of the Memorial Gardens. This photo is looking north along the straight line of mature trees, towards the Exchange Hotel, memorials, and Rosedale Hotel.



Figure D4. Detail of the 1927 Angus McMillan cairn, showing the local stone blocks, heavy protruding lime- mortar joints, 'concrete' plinth and marble plaque with hand cut incised lettering.



Figure D5. The plaque commemorating Victoria's 150th anniversary in 1985, mounted on the granite rock.



Figure D6. The largest Elm tree at the north end of the row (closest to Latrobe Bridge).



Figure D7. The National Trust (Vic) badge on the largest, far north tree.



Figure D8. The northern end of the row of Elms in Lyons Street.



Figure D9. The southern end of the row of Elms, behind the Rosedale memorials (interplanted with other species).



Figure D10. Looking north, the southern end of the row of Elms, interplanted with other species.

Sources

All photos taken in 2015 by Heritage Intelligence Pty Ltd as part of Wellington Shire Stage 2 Heritage Study.

Comparative analysis

There is no other collection of interrelated street beautification trees with historic memorials in Wellington Shire, which include an exceptional incontinuous row of 11 Purple-leaved Dutch Elm trees (that are over 100 years old). This significant and rare collection of exceptional Elm trees and memorials also includes a 1927 memorial cairn to Angus McMillan, a 1935 WW1 monument, 1951 Memorial Garden plantings, a 1985 plaque commemorating Victoria's 150th anniversary and a 1996 monument 'in honour of the men and women of Rosedale and District who contributed to our nation's freedom'.

Management Guidelines

Whilst landowners are not obliged to undertake restoration works, these guidelines provide recommendations to facilitate the retention and enhancement of the culturally significant place, its fabric and its setting, when restoration works or alterations to the building are proposed. They also identify issues particular to the place and provide further detailed advice where relevant. The guidelines are not intended to be prescriptive and a pragmatic approach will be taken when considering development proposals. Alternative approaches to those specified in the guidelines will be considered where it can be demonstrated that a desirable development outcome can be achieved that does not impact on a place's heritage integrity.

1. Location and Setting

- 1.1. Ensure all future road works, services and landscaping works respect the original location of these monuments and trees, and manage design developments which make it practical and safe to leave them there. Ensure there is room for large crowds during memorial services.
- 1.2. If, in the long term, VicRoads proposes to bypass Princes Street (which is very narrow) and the section of Lyons Street to the bridge, there will be less pressure on the heritage places to

accommodate, or be demolished due to heavy traffic, and a long term management plan could be developed by Council and VicRoads, with all stakeholders to ensure the heritage values of this area are not unnecessarily compromised in the short term.

- 1.3. Retain and maintain the Purple-leaved Dutch Elm trees with professional arborist advice.
- 1.4. To maintain the impressive row of Purple-leaved Dutch Elm trees, investigate the feasibility of propagating the variety for replacement of the missing Elms in the Lyons St reserve, and to replace any elms which may die in the future.
- 1.5. Seek professional arborist advice on methods to retain the Himalayan Cedar and the Purple-leaved Dutch Elm tree which are growing too close to each other.
- 1.6. Retain clear views to the monument from the Streets.
- 1.7. Do not put signage in the view lines to the monument.
- 1.8. New interpretation storyboards should be placed to the side of the monuments, not behind or in front of them.
- 1.9. If ground works are proposed, e.g. a concrete apron around the monument, the ground should first be subject to an archaeological assessment prior to works.
 - 1.9.1. Ensure concrete has exposed aggregate to match the colour of the earth.
 - 1.9.2. Ensure the concrete does not adhere to the monument itself. Insert 10mm x 10mm grey polyurethane seal over a zipped Ableflex joint filler around the stone plinth, to protect the stone from concrete adhering to it and to allow expansion joint movement and prevent water from seeping below the monument.

2. Care and Maintenance

- 2.1. Refer to the Resources list below regarding the memorials. These resources were written by Jenny Dickens, Senior Conservator, Heritage Victoria. They are in plain English, well illustrated and have very important instructions. Further assistance is available from the Shire's heritage advisor.
- 2.2. The biggest risk to memorials is permanent damage by the use of cleaning materials, agents and methods. E.g. acid washing dissolves the marble and the damage cannot be undone; sand and water blasting remove the stonemasons skilled decorative works, the polished surfaces and lettering, and allows water to enter.
- 2.3. Memorials are meant to develop a patina of age to imbue them with a sense of timelessness, and gravity of the memory. They are not meant to look bright and super clean, apart from when they were built.
- 2.4. Overall, the memorials are in fair to good condition, but require some maintenance and repairs:
 - 2.4.1. Never use modern products on these historic stone monuments as they will cause expensive damage. Use lime mortar to match existing on the McMillan and 1935 Soldiers Memorial. Traditional mortar mixes were commonly 1:3, lime:sand.
 - 2.4.2. **Do not seal** the monuments with modern sealants. Allow the structure to evaporate water from the surface and to expel water that may enter from cracks, corrosion, etc.
 - 2.4.3. Obtain a copy of "Salt Attack and Rising Damp" by David Young (2008), which is a free booklet available for download from Heritage Victoria website. It is in plain English, well illustrated and has very important instructions and should be used by tradesmen and Council maintenance staff. Further assistance is available from the Shire's heritage advisor.
 - 2.4.4. It is recommended that a professional materials conservator is engaged to :
 - 2.4.4.1.1. investigate the source of the staining on the plaque and
 - 2.4.4.1.2. to clean and repair the marble plaque (never acid wash the memorials).
 - 2.4.5. It is recommended that a heritage stonemason/conservator advise on how to clean the staining on the 1996 memorial, and how to restore the (bluestone?) base of the 1935 memorial, which has had a very inappropriate 'sealant' applied to it; that substance is

breaking down, resulting in a very disfigured appearance which will continue to degrade.

2.4.6. Never sand, water or soda blast the monuments as it will permanently pit the surface, remove the lettering and make the stone quickly become porous and dirty, and blast out the mortar.

3. Restoration

3.1. Apply for a grant to professionally restore the soldiers' memorial.

Resources

The following fact sheets contain practical and easy-to-understand information about the care and preservation of war heritage and memorabilia commonly found in local communities across Victoria. They can be downloaded at <<http://www.dpc.vic.gov.au/index.php/veterans/victorian-veterans-virtual-museum/preserving-veterans-heritage/preserving-war-heritage-and-memorabilia>>:

- Avenues-of-honour-and-other-commemorative-plantings
- Finding-the-right-conservator-tradespeople-and-materials
- General-Principles
- Useful-resources-and-contacts
- War-Memorials.