

Locality: BRIAGOLONG
Place address: 55-57 AVON STREET
Citation date 2016
Place type (when built): RSL Club Rooms
Recommended heritage protection: Local government level
Local Planning Scheme: Yes
Vic Heritage Register: No
Heritage Inventory (Archaeological): No

Place name: RSL Sub Branch Club Room



Architectural Style: Vernacular log cabin
Designer / Architect: Fred Foster
Construction Date: 1948

Statement of Significance

This statement of significance is based on the history, description and comparative analysis in this citation. The Criteria A-H is the Heritage Council Criteria for assessing cultural heritage significance (HERCON). Level of Significance, Local, State, National, is in accordance with the level of Government legislation.

What is significant?

The RSL Sub Branch Club Room at 55-57 Avon Street, Briarolong is significant. The original form, materials and detailing as constructed in 1948 are significant.

The hanging timber gate 'Gillio's Gate' at the entrance on the southern boundary is significant. The collection of war memorabilia held by the RSL Sub Branch is significant. The plaque commemorating the money donated by the children of Jim Mills is significant.

Later outbuildings and alterations to the building are not significant.

How is it significant?

The RSL Sub Branch Club Room is locally significant for its historical, social, scientific (technical and rarity) values to the Shire of Wellington.

Why is it significant?

The RSL Sub Branch Club Room **is historically significant at a local level** as it illustrates the importance of the Returned Sailor's Soldier's Airmen's Imperial League of Australia (RSSAILA), and later the Returned Services League (RSL), movements in Australia and Wellington Shire following World War II. The construction of a Sub Branch was the initiative of the district's returned soldiers following World War II. It was World War I veteran and bushman William (Bill) Gillio, an experienced builder of log cabins, who suggested they build a log cabin for the club room. The land was provided to the RSL Sub Branch and the returned soldiers commenced building the club room in March 1948. The soldiers felled the trees themselves and constructed the log cabin. The log cabin was completed by September 1948, and officially opened as an RSSAILA Sub Branch on 1 April 1949. Gillio constructed by hand the gate at the entrance to the property. (Criterion A)

The RSL Sub Branch Club Room retains a significant collection of war memorabilia from a number of conflicts in which the local soldiers served. The large and varied collection **is historically significant at a local level**. Further investigation is required to determine if the collection holds state or national significance. (Criteria A & H)

The RSL Sub Branch Club Room **is socially significant at a local level** for its continual use as RSSAILA and RSL Sub Branch Club Room from its opening in 1948, to today. The log cabin was built as a Sub Branch Club Room by the returned soldiers and since its opening, has served returned soldiers from all conflicts in which Australia has been involved, including recent ones. The Club holds annual ANZAC day celebrations and Remembrance Day ceremonies. In 1990, the RSL Sub Branch raised funds to purchase the land outright. (Criterion G)

The RSL Sub Branch Club Room **is scientifically (technically) significant at a local level for its use of a rare** construction method in the Shire in the twentieth century. It is believed to have been the last log cabin built with timber squared with a broadaxe in the Shire. The cabin retains a high level of integrity to the interior and exterior and is constructed of untreated Yellow Stringybark logs that were squared with a broadaxe, and laid horizontally, alternating with a cross log at the corners and secured by a plug. The walls sit on a Red Box log base. This type of construction was evident in the mountainous timber regions of the Shire in the nineteenth century but was a rare type of construction in the twentieth century. It is believed to have been the first R.S.L. log cabin Club Room built in Australia and the only log cabin R.S.L. Branch remaining today. (Criteria B & F)

Statutory Recommendations

This place is recommended for inclusion in the Schedule to the Heritage Overlay of the Wellington Shire Planning Scheme to the boundaries as shown on the map.

External Paint Controls	Yes
Internal Alteration Controls	Yes
Tree Controls	No
Outbuildings or fences which are not exempt under Clause 43.01-3	Yes, Gillio's Gate
Prohibited Uses May Be Permitted	No
Incorporated Plan	No
Aboriginal Heritage Place	Not assessed

Map of recommended boundary for Heritage Overlay



KEY

- Recommended for Heritage Overlay
- Title boundary

RSL Sub Branch Club Room 55-57 Avon St, Briagolong

Project: Wellington Shire Stage 2 Heritage Study
Client: Wellington Shire Council
Author: Heritage Intelligence Pty Ltd
Date: 12/2/16

History

Locality history

Briagolong was originally part of Angus McMillan's Bushy Park Run and was known as Top Plain. From 1865, Briagolong was part of the Avon Shire (Context 2005:38). In 1866, land was selected at Top Plain after the Amending Land Act of 1865 was passed; the 42nd section of the Act allowed selection of four 20 acre blocks provided the land was within ten miles of a recognised goldfield. As a result, miners moved into the area to prospect for gold in the Freestone Creek and its tributaries. By 1868, many of the claims had been taken out along Freestone Creek and its tributaries; 200 miners were located on Macmillan's Creek at one time. A small number of miners continued to prospect during the 1870s. In 1873, the area was named Briagolong, which is derived from the name of the Aboriginal group of the area, the Braiakaulung. Members of this tribe had been removed to Ramahyuck Mission Station in 1864 (Fletcher & Kennett 2005:61; Victorian Places).

By 1875, Briagolong was known as a rich agricultural district. Early crops in the area included fruit, wine grapes and maize, and wheat, oats and barley on the drier lands (Fletcher & Kennett 2005:61; Victorian Places). Hops was planted extensively and flourished in the Briagolong district on the river flats, particularly in the 1880s and 1890s, with a number of hop kilns built. However, there was infestation of red spider in the early 1890s which caused the crop to decline by 1913. Fruit orchards in the area exported to London in the 1890s and from the 1880s, several vineyards were planted. Several small cheese factories existed in the district and growth of the dairy industry was spurred by the opening of the Briagolong Cheese Factory in 1873 (Fletcher & Kennett 2005:61; Context 2005:14).

A quarry operated on Freestone Creek, north of Briagolong from the 1860s and timber milling also became an important industry in the area (Fletcher & Kennett 2005:61; Context 2005:14). "One of the first substantial red gum mills was William Forbes' Stratford Steam Saw Mill, that he established in 1865 at Murray's Corner, now known as Invermiechie. In 1872, he relocated to a creek on Freemans Road at Briagolong, and named his significantly expanded enterprise the Victoria Saw Mill. The saw mill provided red gum weatherboards for buildings, had a significant contract with the Melbourne Tramways Trust to supply two million red gum blocks for street paving, made red gum fellows used in wagon wheels, and produced fencing and verandah posts. Another sideline was the production of kit houses. The red gum was quickly cleared from the plains and Forbes closed his mill in 1889. At the mill site today, the top of the well can still be seen, while in the Briagolong area, there are several Forbes' kit homes. One of the most notable buildings in Briagolong, the Briagolong Mechanics Institute, was built from Forbes' weatherboards" (Context 2005:20). A number of other mills have operated in Briagolong over the years, exporting timber via the railway (Fletcher & Kennett 2005:61).

The first township lots were sold in Briagolong in 1874, and by 1875 the population of Briagolong and the district was 200 (Fletcher & Kennett 2005:61; Victorian Places). Briagolong became part of the Shire of Maffra in 1875 (Context 2005:39). The town grew in the following years, to include two hotels, a school, a Mechanics Institute and library (the original library is retained today), and churches. In 1888 there was a second round of town lot sales. The railway arrived in Briagolong in 1889 and milk was transported twice daily to Maffra (Fletcher & Kennett 2005:61). In 1903, the *Australian Handbook* reported that the town comprised the 'Briagolong Hotel, wine hall, Presbyterian and Roman Catholic churches, coffee palace, a State School (No. 1,117), a creamery, wine and cider industries, three stores, bee farm, and police station'. In 1911, Briagolong's population was at a high 462 people (Victorian Places).

The population of Briagolong reduced from 462 people (in 1911) to approximately 300 people in the 1930s and 1950s. By 1976, the town had a population total of 216 people, until a number of people moved to the area who were interested in building stone and mud brick houses, in search for an alternative lifestyle (Fletcher & Kennett 2005:61). In 1994, Wellington Shire was created by the amalgamation of the former Shires of Alberton, Avon and Maffra, the former City of Sale, most of the

former Shire of Rosedale, as well as an area near Dargo which was formerly part of Bairnsdale Shire (Context 2005:39). In the 2000s, the population of Briagolong remains in the 500s (Victorian Places).

Thematic context

This place is associated with the following themes from the *Wellington Shire Thematic History* (2005):

8. Governing and administering:

- 8.7 War and Defence

9. Developing Cultural Institutions and Way Of Life

- 9.4 Forming Associations, Recreation

Place history

The Briagolong RSL Sub Branch meets monthly at the log cabin, located on the corners of Avon and Landy streets.

A total of 76 Briagolong men served in World War I, with 27 sacrificing their lives, including the four Whitelaw brothers. An RSL was formed after World War I, but was disbanded after some time. In March 1946, World War II returned soldiers held a meeting at the local Mechanics Institute with a view to forming a Briagolong RSL sub-branch. Subsequently, the first RSSAILA sub-branch meeting was held on 3 May 1946, with meetings then held monthly at the Mechanics Institute, Mill's woolshed, or at a member's house (Mills 1971:19; Watt 1994:14). In December 1946, it was decided that a Briagolong sub-branch clubroom was necessary (Lawless 2015).

The Kelly family made the current site available and a 'prominent Melbourne philanthropist' donated 100 pounds to assist the construction. It was World War I veteran and bushman William (Bill) Gillio (d. 4 Nov 1967), an experienced builder of log cabins, who suggested they build a log cabin (Lawless 2015; Watt 1994:11). The architect for the cabin was Fred Foster and Maffra architect and returned serviceman Stephen Ashton drew up the plans, which showed the floorplan and intended materials, and the porch entrance on the opposite side of the main elevation (Figure H1) (Watt 1994:12). Drawings showing the suggested wall construction are held at the cabin (Figure H2). This drawing shows a log wall construction with a log base underneath the floor (no stumps), shingles to the roof and sawn timber windows frames and sills. Attached to the drawing are the signatures of the approximately 33 members and the President of the Briagolong R.S.L. in 1948. The returned soldiers commenced building the club room in March 1948, supervised by Hugh Challen and Jim Mills (Lawless 2015; Watt 1994:14).

A local newspaper article in August 1948 reported that 'steady progress [was] being maintained in the construction of a log cabin at Briagolong by returned servicemen of that district', to serve as the club room of the local branch R.S.L.. At this date, the article reported that all of the logs in the construction of the walls were in position, the floor joists were in position and the roof was well advancing. The sawn hardwood of the floor was cut and seasoning. All of the work, from felling of the trees and carting, to milling, sawing and building was carried out by working bees (*Gippsland Times*, 19 Aug 1948:3).

The soldiers felled the trees themselves (Watt 1994:14). The log cabin was constructed with 30ft logs of untreated Yellow Stringybark that were squared with a broad axe by Gillio, and put together without nails. It is said to be 'the last log cabin built with timber squared with a broadaxe' (Watt 1994:14). It was constructed on a red box log base (not stumped). The roof was clad with shingles at first, but was later replaced with sheets of malthoid (which remain in 2015 under the iron cladding) and then with an iron roof. The timber floor was also covered by sheets of malthoid (remain in 2015). The chimney stack on the exterior of the cabin was constructed of stones that were formerly part of the Briagolong Catholic Church building; these stones were originally from a quarry that operated on Freestone Creek, north of Briagolong, from the 1860s (Lawless 2015; Watt 1994:12; Context 2005:18). The mantle

was made of red box and timber shutters enclosed the windows (remain in 2015) (Lawless 2015; Watt 1994:12). The construction type is said to be in the log cabin style built by mountain cattlemen (Vardy 1994:105) The first fence was a timber 'bush fence' (Lawless 2015).

The cabin was completed by September 1948, and officially opened on 1 April 1949 (Watt 1994:14, 17) It is thought to have been the first R.S.L. log cabin clubroom built in Australia (RSL Vic Branch). A photo of the interior that dates to the opening of the cabin (Watt 1994:17) showed members posing in front of the Red Box mantle, and interior of the Yellow Stringybark log structure, with the cross beams, which remain in 2015 (Figure H3).

Photos dating to c1968 showed the west and south elevations of the log cabin, as it appears in 2015, with the timber shutters to the windows and iron roof cladding (Figures H4 & H5). The surrounding land was vacant and the first timber post and rail fence can be seen, with the timber-framed entrance and Gillio's Gate (which remain in 2015), with a section of fence (perhaps an entry point) enclosed with a log construction (Figure H6) (SLV). The pedestrian gate is a handmade timber construction, built by Gillio himself before 1967, and is actually an oddly formed tree, found by Gillio (Lawless 2015; Watt 1994:4).

The post and rail timber fence that runs along the south and west boundaries in 2015 was built c1980s by local timber cutter Kerry Dice. The entrance 'Gillio's Gate' remains, and is now marked by a sign bearing the name on the timber arch.

Around 1990, the R.S.L. branch raised \$9,000 to purchase the property outright, with the Mills' family donating the remainder necessary (Lawless 2015). Two plaques (one inside, one on a large rock in front of the cabin) note that 'the children of the late Mr Jim Mills compensated the R.S.L. for the purchase of this land, on which this R.S.L. log cabin is built.

A plaque near the entrance of the cabin commemorates the 50th anniversary of the 'formation of the Briagolong R.S.L. Sub Branch, 1946-1996'. On 6 April 1996 the President of the Sub Branch was B. Adams, while the Victorian Present was B. Ruxton O. B. E. (plaque on site), who attended the anniversary celebrations.

In 2015, all of the original timbers and logs of the cabin have been retained. Aeroplane engine parts sit within the boundary.

The R.S.L. holds an extensive collection of memorabilia and portraits. In 2015, the log cabin continues to serve the R.S.L. members and has always been the site of ANZAC day celebrations and Remembrance Day ceremonies. It has also served the Red Cross, Girl Guides and Scouts. Today, it is thought to be the only log cabin R.S.L. branch in Australia.



Figure H3. A photo of the members inside the cabin, upon the opening (Watt 1994:17).

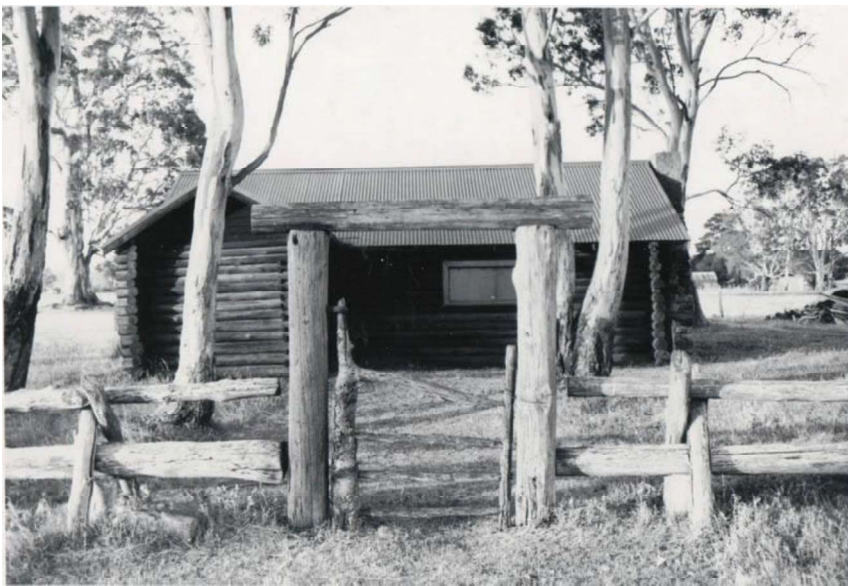


Figure H4. The cabin c1968 (Briagolong History facebook page, MDHS 02798VMFF)



Figure H5. The west elevation of the cabin. Photo probably also dates to c1968 (SLV).



Figure H6. A photo dating to c1968, showing the original fence and Gillio's Gate at this date (Briagolong History facebook page No. MDHS 02797VMFF).

Sources

Australian Handbook (1903), as cited on Victorian Places.

Briagolong History facebook page, <<https://www.facebook.com/BriagolongHistory/photos/>>, accessed 19 Dec 2015.

Context Pty Ltd (2005), *Wellington Shire Heritage Study Thematic Environmental History*, prepared for Wellington Shire Council

Fletcher, Meredith & Linda Kennett (2005), *Wellington Landscapes, History and Heritage in a Gippsland Shire*, Maffra.

Gippsland Times

Lawless, Chris (Briagolong RSL member), personal communication on site, 25 Nov 2015.

Mills, Peter (19171), *Back to Briagolong : 1971*, Sale [Vic].

RSL Victorian Branch, 'Briagolong RSL', <<http://www.rslvic.com.au/>>, accessed 17 Dec 2015.

State Library of Victoria (SLV), picture collection, 'Log Hall, C. 1920's, Briagolong', <<http://search.slv.vic.gov.au/>>, accessed 17 Dec 2015.

Vardy, Wal (1994), *Beneath blue hills : a history of Mewburn Park*, Bairnsdale [Vic].

Victorian Places, 'Briagolong', <<http://www.victorianplaces.com.au/briagolong>>, accessed March 2016.

Watt, Dorothy (1994), *Through Gillio's Gate : a history of Briagolong R.S.L.*, Briagolong.

Description

This section describes the place in 2016. Refer to the Place History for important details describing historical changes to the physical fabric.

The RSL sub-branch club room is a log cabin construction, built in 1948 in the style of a mountain log cabin. The cabin is set back on an unlandscaped block, at the north-east corner of Avon and Landy streets, to the east of Briagolong township. There are modern outbuildings on the north boundary, which are not significant.

Log construction, as extracted from Miles Lewis's *Australian Building* (Section 2.2 Logs):

Log construction is a traditional form dating from the Iron Age and used in forested areas in Europe. Some form of log construction survived in northern England into the sixteenth century, but the tradition had died out in Britain before the time of Australian settlement. When it was used by early settlers, therefore, it was not a reflection of current British practice, and one must ask whether it was simply a natural response to local conditions - timber which was plentiful but difficult to work - or whether there were any specific cultural influences at work. Northern Europe may have been the traditional home of log construction, but North America was the area where colonial military and naval men might have come into more direct contact with it. The conventional log buildings of North Europe and America are certainly of more relevance to later log construction in Australia, so far as we know of it. Log construction also had some impact in Melbourne and in the Port Phillip District generally.

Figure D1. The log cabin is a small rectangular structure with a projecting entrance porch. The gabled roof is clad in (modern) corrugated iron, but retains an earlier roof cladding of malthoid sheets underneath (the roof was originally clad with shingles). The cabin is constructed of untreated Yellow Stringybark logs that were squared with a broadaxe, and laid horizontally, alternating with a cross log at the corners and secured by a plug (Lawless 2015). The walls sit on a Red Box log base (not stumped). The log cabin is in very good condition and retains a very high level of integrity as it retains its original 1948 timbers.

The main (south) elevation faces Avon Street, with a path leading to the entrance off the north side of the entrance porch. To the right of the entrance is a short but wide timber-framed window enclosed by the original timber shutters (no glazing). Near the entrance door is a plaque commemorating the 50th anniversary of the formation of the Briagolong RSL Sub Branch in 1996, and a sign bearing the name 'RSSAILA Log Cabin March 48'.

Figure D2. The east elevation has a large external stone chimney stack, with a red brick section to the top, which retains some render. There are modern metal ties around the chimney stack, which have supported the stack for many years (Lawless 2015). The gabled end is clad with sawn timbers.

Figure D3. The north (long) elevation of the cabin has a second short, wide timber-framed window with original timber shutters (no glazing).

Figure D4. The west elevation has a smaller version of the timber-framed window with shutters. The logs of this elevation continue to form the porch.

Figure D5. The interior of the 1948 log cabin is in very good condition and has a very high level of integrity, retaining its original timber elements. The interior walls are not lined, with the Yellow Stringybark logs evident. Sheets of malthoid line the sawn hardwood of the floor, and are still visible under the iron cladding of the roof. Sawn timbers and hewn logs form the ceiling trusses and cross beams. The original, large Red Box logs remain, forming the mantle. The R.S.L holds an extensive collection of memorabilia and local soldiers portraits.

Figure D6. The gateway surround and the post and rail timber fence that runs along the south and west boundaries in 2015 was built c1980s, replacing an earlier 'timber bush' fence. Leading to the cabin is an entrance marked by a timber post and lintel arch, with signs attached reading 'Gillio's

Gate' remains, and is now marked by a sign bearing the name on the timber arch. Inside the entrance is a small collection of aeroplane engine parts.

Figure D7. Inside the fence is a plaque, attached to a boulder, commemorating the donation made by the children of the late Mr Jim Mills compensating the RSL for the purchase of the land.



Figure D1. The south elevation of the cabin, which faces Avon Street. The entrance is off the east side of the entrance porch, to the left of the building.



Figure D2. The east elevation with the large stone chimney stack, with a red brick top.



Figure D3. The north elevation with its wide timber-framed window with its original timber shutters (like the main elevation).



Figure D4. The west elevation and its shorter version of the timber-framed window.



Figure D5. The interior of the log cabin is in very good condition and has a very high level of integrity, retaining its original timber elements. The interior walls are not lined, with the Yellow Stringybark logs evident.



Figure D6. The original gate, 'Gillio's Gate' and the c1980s archway and timber fence. Inside the fence are a collection of aeroplane engine parts.



Figure D7. Inside the fence is a plaque, attached to a boulder, commemorating the donation made by the children of the late Mr Jim Mills compensating the RSL for the purchase of the land.

Sources

All photos taken in 2015 by Heritage Intelligence Pty Ltd as part of Wellington Shire Stage 2 Heritage Study.

Lawless, Chris (Briagolong RSL member), personal communication on site, 25 Nov 2015.

Comparative analysis

The RSL Sub Branch Club Room is a vernacular log cabin built in 1948, purpose-built by local returned soldiers as their club rooms following World War 2. The vernacular style was suggested by local member Bill Gillio. It is believed to have been the last log cabin built with timber squared with a broadaxe in the Shire. This type of construction was evident in the mountainous timber regions of the Shire in the nineteenth century but was a rare type of construction in the twentieth century. The cabin retains a high level of integrity to the interior and exterior. It is believed to have been the first R.S.L. log cabin Club Room built in Australia and the only log cabin R.S.L. Branch remaining today.

‘Victorian High Country Huts Association’ has photographs of other huts in the area which showed that this log cabin was one of the best constructions, retaining a very high degree of intactness and is in very good condition. Bill Gillio and Andy Estoppey of Briagolong constructed the Moroka Hut c1946 (still exists), in the same mountain log cabin construction style, built to serve as a shelter for local mountain cattleman.

Further research is required to establish if the Briagolong RSL cabin is of State or National significance.

Management Guidelines

Whilst landowners are not obliged to undertake restoration works, these guidelines provide recommendations to facilitate the retention and enhancement of the culturally significant place, its fabric and its setting, when restoration works or alterations to the building are proposed. They also identify issues particular to the place and provide further detailed advice where relevant. The guidelines are not intended to be prescriptive and a pragmatic approach will be taken when considering development proposals. Alternative approaches to those specified in the guidelines will be considered where it can be demonstrated that a desirable development outcome can be achieved that does not impact on a place's heritage integrity.

1. Setting (views, fencing, landscaping, paths, trees, streetscape)

- 1.1. Retain a setting of indigenous eucalyptus trees.
- 1.2. Retain views of the Avon and Landy Street elevations.
- 1.3. Retain the gateway, gate, and existing signs in the existing location.
- 1.4. Do not add any form of advertising signs in the viewlines to the gate, fence or log cabin along the Avon and Landy Street sides.
- 1.5. Do not paint or seal any of the unpainted timbers, logs, fence or gate.
- 1.6. Ensure signs and services such as power poles, electrical conduit, bus shelters, signs, etc, are located so that they do not impact on the important views. If they are visible, reduce the impact by painting them the colour of the material/setting behind them.
- 1.7. New interpretation storyboards, should be placed to the side of the log cabin, not in front of it.
- 1.8. Retain the unlandscaped setting.
- 1.9. Paving
 - 1.9.1. The most appropriate paving is pressed granitic sand, however, if hard paving is necessary, asphalt is the most appropriate. Concrete is not recommended but if required, should have a surface of sand coloured and size, exposed aggregate.
 - 1.9.2. Ensure the hard paving does not adhere to the building itself. Insert 10mm x 10mm grey polyurethane seal over a zipped Ableflex joint filler around base of the log cabin, to protect the original timber from concrete adhering to it and to allow expansion joint movement and prevent water from seeping below it.

2. Additions and New Structures

- 2.1. New structures should be restricted to the rear of the property and screened from view, with a brush (or other natural material) fence, as shown on the aerial below. Use galvanised corrugated iron on the roof which is a traditional material, not Zincalume or Colorbond. However, together with 1.1, appropriately designed and sympathetic additions should be parallel and perpendicular to the existing building, single storey, similar proportions, height, wall colours; but parts not visible in those views could be of any design, colours and materials.
- 2.2. Avoid concrete next to the timber logs as this will restrict the natural drainage and drying out of the footings and base timbers. Install paths at least 500mm away from the walls and 250mm lower than the ground level inside the building. Fill the gap between the path and the wall with very coarse gravel to allow moisture to evaporate from the base of the wall.
- 2.3. New garden beds
 - 2.3.1. These are not encouraged as the setting should be a natural unlandscaped bush setting. However, if garden beds are installed in future, they should be a minimum of 1000mm from the timber walls, preferably further, and the ground lowered so that the ground level of the garden bed is a minimum of 250mm lower than the ground level inside the building and slope it away from the building, and the gap can be backfilled with very

course gravel up to the level of the concrete path. The coarse gravel will have air gaps between the stones which serves the function of allowing moisture at the base of the wall to evaporate. The reason that garden beds are detrimental to the building, is by a combination of: watering around the base of the wall and the ground level naturally builds up. The ground level rises, due to mulching and leaf litter and root swelling, above a safe level such that it blocks sub floor ventilation, and the wall is difficult to visually monitor on a day to day basis, due to foliage in the way.

3. Accessibility

3.1. There is good accessibility to the log cabin.

4. Reconstruction and Restoration

If an opportunity arises, consider restoring and reconstructing the following.

4.1. Joinery

4.1.1. Do not paint or seal any unpainted timbers.

4.1.2. Repaint all existing painted joinery, inside and out, in the same colour (possibly Venetian Red or Indian Red) as that used on the timber supporting the metal plaque near the entrance of the cabin (that commemorates the 50th anniversary of the formation of the Briagolong R.S.L. Sub Branch, 1946-1996).

4.2. Roofing, spouting and down pipes

4.2.1. Colorbond is a very modern plastic coated material and is not in character with the hand made vernacular log cabin, it is recommended that either:

4.2.1.1. Replace the fading and lichen covered green Colorbond, with unpainted galvanised corrugated iron (not Zincolume which is highly shiny and reflective for many years and will look at odds with the old weathered log walls.

4.2.1.2. Or put a timber shingle roof over the top of the existing roof, in such a manner that the existing roof remains water tight.

4.2.2. Replace the white plastic down pipes with unpainted galvanised iron. A temporary measure is to paint the white plastic the same colour as the timber so that they blend in, instead of contrasting.

4.2.2.1. Use galvanised corrugated iron roofing, spouting, down pipes and rain heads.

4.2.2.2. Do not use Zincolume or Colorbond, or plastic.

4.2.2.3. Use ogee profile spouting, and round diameter down pipes.

4.3. Fences

4.3.1. Replace/reconstruct the existing fence with the original bushman's fence design.

4.4. Caulking/draught proofing the walls externally and internally. (Thanks to John Lewis, Director of Engineering and Operations, Sovereign Hill, Ballarat, for the following instructions.)

4.4.1. Thoroughly remove the recent yellow foaming caulking compound. Not only is it visually inappropriate, but it is dangerous as it is a highly flammable material, which puts the occupants and the very special collection of memorabilia at unnecessary risk.

4.4.2. Apply a simple, cheap and proven method which is appropriate for this vernacular log cabin design and materials. It can be done with a working bee. This method will last 20 to 30 years and after that, any patching required will be half about half a day's work. The method:

4.4.2.1. Use a local clay (usually available from a shallow depth) that sticks to your boots.

4.4.2.2. Manually pack the clay tightly into the gaps. This will last for 20 or more years.

4.4.2.3. Do not seal the clay or timbers in any way.

4.5. Stone Chimney

4.5.1. Mortar: match the lime/clay mortar, do not use cement mortar.

5. The following permit exemptions for the interior are recommended.

- 5.1. Painting of previously painted walls and ceilings in appropriate heritage colour schemes, provided that preparation or painting does not remove evidence of any original paint or other decorative scheme.
- 5.2. Installation, removal or replacement of carpets and/or flexible floor coverings.
- 5.3. Installation, removal or replacement of screens or curtains, curtain tracks, rods and blinds, other than where structural alterations are required.
- 5.4. Installation, removal or replacement of hooks, nails and other devices for the hanging of mirrors, paintings and other wall mounted art works, memorabilia etc.
- 5.5. Removal or replacement of non-original door and window furniture including, hinges, locks, knobsets and sash lifts.
- 5.6. Installation, removal or replacement of ducted, hydronic or concealed radiant type heating provided that the installation does not damage existing original finishes, and that the central plant is concealed.
- 5.7. Installation, removal or replacement of electric clocks, public address systems, detectors, alarms, emergency lights, exit signs, luminaires and the like.
- 5.8. Installation of new fire hydrant services including sprinklers, fire doors and elements.
- 5.9. Installation, removal or replacement of electrical wiring, providing the conduits and wiring is not visible.

Resources

John Lewis, Director of Engineering and Operations, Sovereign Hill, Ballarat.

Wellington Shire Heritage Advisor

Young, David (2008), "Salt Attack and Rising Damp, a guide to salt damp in historic and older buildings" Technical Guide, prepared for Heritage Victoria.

The following fact sheets contain practical and easy-to-understand information about the care and preservation of war heritage and memorabilia commonly found in local communities across Victoria.

They can be downloaded at <<http://www.dpc.vic.gov.au/index.php/veterans/victorian-veterans-virtual-museum/preserving-veterans-heritage/preserving-war-heritage-and-memorabilia>>:

- Antique-and-heritage-munitions: Firing weapons, artillery and ammunition
- Donating-war-related-memorabilia
- Finding-the-right-conservator-tradespeople-and-materials
- General-Principles
- Honour-rolls (wooden)
- Medals-and-medallions
- Metal-objects: including swords and edged weapons
- Outdoor-heritage
- Paper-and-books
- Photographs
- Uniforms-costumes-and-textiles
- Useful-resources-and-contacts
- Wooden-objects: Cannon, tanks, and other large military objects.

NOTE: The blue shaded area is the preferred location for additions and new development:



KEY

- Recommended for Heritage Overlay
- Title boundary

**RSL Sub Branch Club Room
55-57 Avon St, Briarolong**

Project: Wellington Shire Stage 2 Heritage Study
Client: Wellington Shire Council
Author: Heritage Intelligence Pty Ltd
Date: 12/2/16